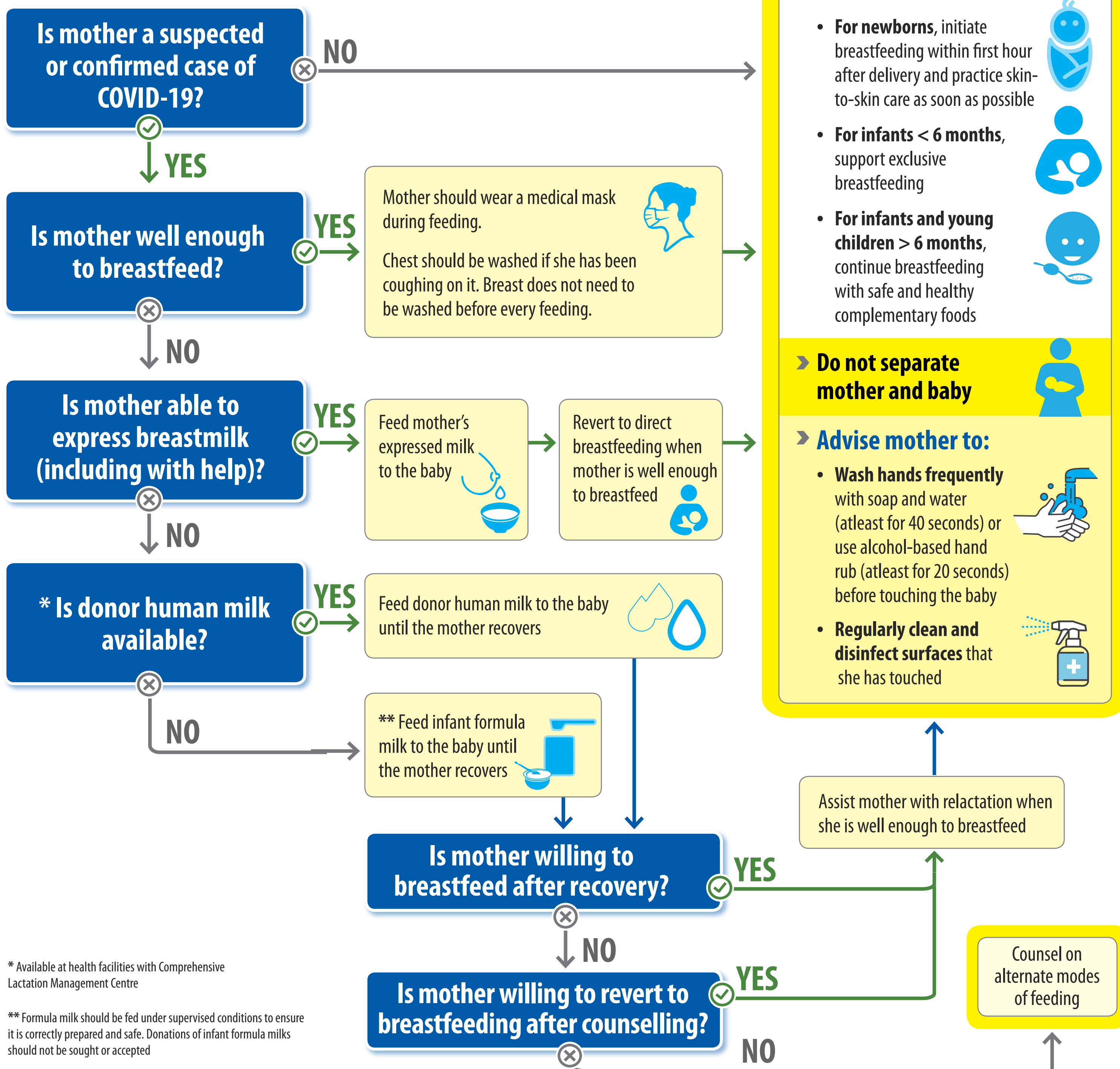




# Decision Tree

for breastfeeding in context of COVID-19: **Guidance for health care workers in facility and community settings**

Breastfeeding should be promoted irrespective of mother's COVID status. It improves survival and provides lifelong health and development advantages to newborns and infants. Breastfeeding also improves the health of mothers.



\* Available at health facilities with Comprehensive Lactation Management Centre

\*\* Formula milk should be fed under supervised conditions to ensure it is correctly prepared and safe. Donations of infant formula milks should not be sought or accepted