



The Harvard Center for Population and Development Studies

## **Working Paper Series**

### **COVID-19 Metrics across Parliamentary Constituencies and Districts in India**

Weiyu Wang<sup>1</sup>, Jeffrey Blossom<sup>2</sup>, Julie Kim<sup>1</sup>, Priyanka deSouza<sup>3</sup>, Weixing Zhang<sup>1</sup>, Rockli Kim<sup>1,4</sup>, Rakesh Sarwal<sup>5</sup>, S. V. Subramanian<sup>1,6,7,\*</sup>

November 17, 2020

HCPDS Working Paper Volume 20, Number 4

The views expressed in this paper are those of the author(s) and do not necessarily reflect those of the Harvard Center for Population and Development Studies.

## **Affiliations**

1. Harvard Center for Population and Development Studies
2. Center for Geographic Analysis, Harvard University
3. Department of Urban Studies and Planning, Massachusetts Institute of Technology
4. Division of Health Policy and Management, College of Health Science, Korea University
5. National Institution for Transforming India (NITI) Aayog, Government of India
6. Department of Social and Behavioral Sciences, Harvard T.H. Chan School of Public Health
7. Honorary Senior Fellow (Non-Resident) National Institution for Transforming India (NITI) Aayog, Government of India

## **Corresponding Author**

S. V. Subramanian, PhD  
Harvard Center for Population and Development Studies  
9 Bow Street, Cambridge, MA 02138  
Professor of Population Health and Geography  
Department of Social and Behavioral Sciences  
Harvard T.H. Chan School of Public Health  
Email: <mailto:svsubram@hsph.harvard.edu>

## **Abstract**

In India, Parliamentary Constituencies (PCs) could serve as a regional unit of COVID-19 monitoring that facilitates evidence-based policy decisions. In this study, we presented the first estimates of COVID-19 cumulative cases and deaths per 100,000 population, and the case fatality rate (CFR) between January 7th, 2020 and October 18th, 2020 across 543 PCs and 721 districts of India. We adopted a novel geographic information science-based methodology called crosswalk to estimate COVID-19 outcomes at the PC-level from district-level information. We found a substantial variation of COVID-19 burden within each state and across the country. Access to PC-level and district-level COVID-19 information can enhance both central and regional governmental accountability of safe reopening policies.



# COVID-19 Metrics across Parliamentary Constituencies and Districts in India

Weiyu Wang<sup>1</sup>, Jeffrey Blossom<sup>2</sup>, Julie Kim<sup>1</sup>, Priyanka deSouza<sup>3</sup>, Weixing Zhang<sup>1</sup>, Rockli Kim<sup>1,4</sup>,  
Rakesh Sarwal<sup>5</sup>, S. V. Subramanian<sup>1,6,7,\*</sup>

<sup>1</sup> Harvard Center for Population and Development Studies

<sup>2</sup> Center for Geographic Analysis, Harvard University

<sup>3</sup> Department of Urban Studies and Planning, Massachusetts Institute of Technology

<sup>4</sup> Division of Health Policy and Management, College of Health Science, Korea University

<sup>5</sup> National Institution for Transforming India (NITI) Aayog, Government of India

<sup>6</sup> Department of Social and Behavioral Sciences, Harvard T.H. Chan School of Public Health

<sup>7</sup> Honorary Senior Fellow (Non-Resident) National Institution for Transforming India (NITI) Aayog, Government of India

\* Corresponding author: [svsubram@hsph.harvard.edu](mailto:svsubram@hsph.harvard.edu)

**ABSTRACT** In India, Parliamentary Constituencies (PCs) could serve as a regional unit of COVID-19 monitoring that facilitates evidence-based policy decisions. In this study, we presented the first estimates of COVID-19 cumulative cases and deaths per 100,000 population, and the case fatality rate (CFR) between January 7th, 2020 and October 18th, 2020 across 543 PCs and 721 districts of India. We adopted a novel geographic information science-based methodology called crosswalk to estimate COVID-19 outcomes at the PC-level from district-level information. We found a substantial variation of COVID-19 burden within each state and across the country. Access to PC-level and district-level COVID-19 information can enhance both central and regional governmental accountability of safe reopening policies.

**KEYWORDS** COVID-19, Geographic Precision, Public Policy, India

**Author Contribution** All authors have read and approve the manuscript.

*Conceptualization and Design* (SVS, RS, RK); *Data Acquisition and Analysis* (WW, WZ); *Data Interpretation* (WW, JK, WZ, RK, RS, SVS); *Drafting of the Manuscript* (WW, JK, PD); *Critical revisions to Manuscript* (WZ, RK, RS, SVS); *Overall Supervision* (SVS)

**Disclosures** None.

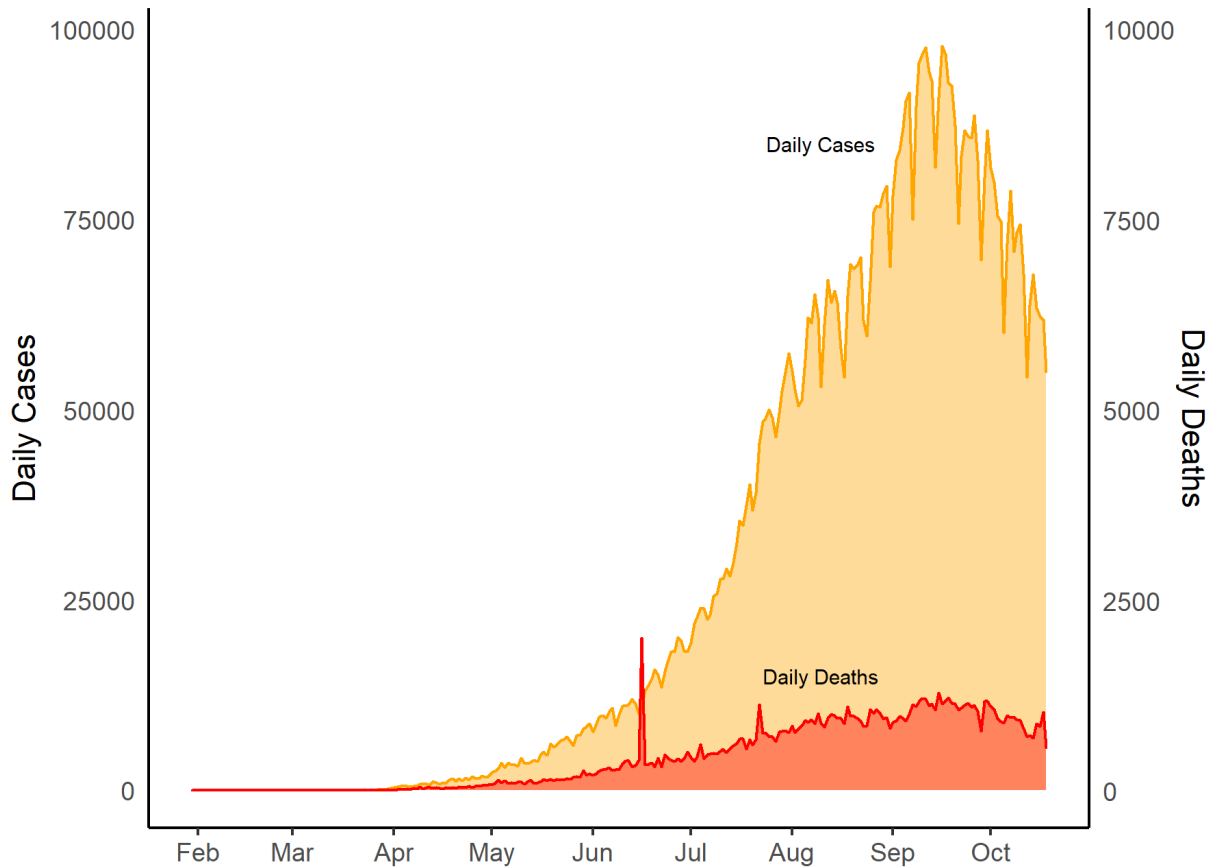
**Funding** This research was funded by the *Bill & Melinda Gates Foundation*, INV-002992.

**Acknowledgments** The authors thank covid19india.org for making the COVID-19 crowd-sourced data accessible through API.

## 1. INTRODUCTION

As of October 18th, 2020, more than 40 million COVID-19 cases, and one million deaths have been reported spanning 214 countries and territories. Originated in China, COVID-19 affected southern Europe and the United States from its early stages<sup>1</sup>. While developed countries are still enduring struggles, low- and middle-income countries (LMICs) overtook the global COVID-19 burden with high population density, lower levels of preparedness, and a shortage of medical resources such as intensive care facilities. Indeed, India, Brazil, and Mexico record one of the world's highest death tolls, following the United States. On October 18th, India reported 7.44 million confirmed cases and 100,000 deaths (see [Figure 1](#)), placing India as the second-highest cases and the third most deaths globally<sup>2</sup>. However, the underlying burden is expected to be much higher than what is estimated given the possible underdetection in India<sup>2,3,4</sup>.

**Figure 1.** Daily new COVID-19 cases and deaths for India as of October 18, 2020



Not only has COVID-19 brought serious health consequences, but has also it incurred substantial economic crises in many countries regardless of the level of economic development. India was not an exception. The 21-day national lockdown implemented in March 2020 contributed to containing the virus, yet it precipitated economic downturns. COVID-19 battered societies experienced massive job loss and disruption in supply chains. It has been estimated that up to 70-100 million more people may be pushed into dire poverty globally during the crisis, nearly half of whom are in South Asia<sup>5</sup>. Now that the Government of India (GOI) has started to reopen the economy in a phased manner<sup>6,7</sup>, the primary policy concern became mitigating the pandemic's economic impact while minimizing the life loss.

Along with a focused effort to combat the spread of the virus at the national level, monitoring the spread of COVID-19 at the regional level is integral for effective policy design and implementation. In large countries like India, the burden of COVID-19 varies substantially across the country. For instance, the number of cases reported in the Maharashtra state reaches nearly 10-fold of any state in northeast India<sup>6</sup>. In order to find the balance between the economic and health consequences of the virus, it is crucial to develop targeted interventions based on regional level data.

Political units such as Parliamentary Constituencies (PCs) could serve as a regional unit of monitoring that facilitates evidence-based political discourse as same as Congressional districts in the United States<sup>8,9</sup>. The Members of Parliament (MPs) elected from 543 PCs across India represent at the Lok Sabha, the lower house equivalent of India, and serve two roles. First, they serve as lawmakers for the entire country. MPs sit in the Parliamentary Committees, Department Related Standing Committees, and Public Accounts Committees that oversee budgets, plans, and schemes. In the era of COVID-19, the Lok Sabha plays an integral role in designing legislation to help India counter COVID-19 and opening the national economy safely. Second, the MPs represent the interests of their constituencies, which is codified in the representation of MPs in District Planning Committees, District Development and Monitoring Committees, and District Infrastructure Scheme Advisory (DISHA) Committees to monitor all centrally sponsored schemes. Therefore, the PCs play a critical link between the local, state, and the government, and offer opportunities for convergence between the administrative and political aspects of policy governance.



To guide evidence-based policymaking for COVID-19, we presented a real-time monitoring framework of COVID-19 burden across PCs in India. Currently, India lacks COVID-19 metrics representing the burden relative to the population size at the regional level. While the state-level counts are widely available, state-wise metrics lack efficiency as it covers a wide variety of population and regions. Given that 36 states and union territories cover 1.38 billion population, it is highly likely that the state-level metrics mask underlying geographic heterogeneity. While the metrics relative to the population size, such as cases and deaths per 100,000, and the case fatality rate (CFR) are used to make policy decisions such as reopening K-12 schools in other countries<sup>10</sup>, such metric has been particularly challenging to compute in India. The rapid population increase and geographic boundaries changes complicated the linkage between the COVID-19 data and the population count.

To address the current lack of regional metrics, we used three COVID-19 metrics – cases per 100,000, deaths per 100,000, and the CFR – across the PCs and districts in India. Districts, the third tier of governance under the constitution of India, are the principal administrative unit in India<sup>11</sup>. While both districts and PCs are nested within each state, their boundaries do not align<sup>12</sup>, PCs are typically a confluence of multiple districts or parts of districts. Among the 543 PCs and 736 districts, only 28 of them have identical boundaries. If PCs are central political geography, districts are a central unit of policy implementation, exemplified by the nationwide development program called Aspirational Districts initiative. In the Aspirational Districts program – as the name suggests – districts are the unit of monitoring and evaluation, as well as development program administration. As COVID-19 has surfaced as a pressing public health and development concern in India, the provision of a district-wide burden could further facilitate the implementation of health and economic policies.

In this paper, we showed the first set of cumulative cases and deaths per 100,000 residents and CFR between January 7th, 2020 and October 18th, 2020 across 543 PCs and 721 districts in India. We estimated the first-ever PC-level COVID-19 cumulative cases and deaths (per 100,000 residents) and computed the CFR from district-level data using recently published a geographic information science (GIS)–based methodology<sup>13</sup>. The method presented in this paper could be further utilized for the real-time monitoring of COVID-19 and PC- and district-level risk assessment. Furthermore, such a monitoring framework could be applied to track other domains of public health.

## 2. METHODS

### 2.1 Data Sources

#### *District level COVID-19 dataset*

We obtained the number of COVID-19 cases and deaths across the districts in India from Covid19India<sup>14</sup> (<https://www.covid19india.org/>). Covid19India is a crowd-sourced platform that collects four COVID-19 metrics on a daily basis – the number of confirmed, active, recovered, and deceased cases. This platform obtained the data from state bulletins and the official state COVID-19 reports in which most of the states publish district-wise statistics. However, the data from states of Andaman and Nicobar Islands, Goa, and the National Capital Territory (NCT) of Delhi were either not formed at district-level or outdated. For these states, we used state-level counts instead of district-level counts. In addition, the data were unavailable for the Mirpur and

Muzaffarabad districts in Jammu and Kashmir, and Noklak in Nagaland. Lastly, the cases that were not assigned to any districts were excluded from our analysis. After excluding the districts where the data were not available, we had COVID-19 cumulative cases and deaths for 720 reporting units (720 districts) representing 736 districts in India.

### *District Boundary Shapefile for COVID-19, 2020*

Since no up-to-date official district shapefile was available, we created a district shapefile using the existing district shapefiles and additional governmental resources considering the district boundary changes over time. Three data sources were used: The first was the India district shapefile of Census 2011, purchased from ML Infomap<sup>15</sup>. This shapefile contained the boundaries of 640 districts as of 2011. The second source was the Bharat maps, published by the Ministry of Electronics and Information Technology of the Government of India, a multi-layer GIS platform with administrative boundaries in 2020<sup>16</sup>. The last was notification documents of district boundary change by the Reserve Bank of India<sup>17</sup>. We obtained the information on new district formation, including the formation date, erstwhile district, and sub-districts.

We used the India district shapefile of Census 2011 as a base map and edited its boundaries using the Bharat Maps as a reference for district borders for districts in 2020. Georeferencing and the edit functions in ArcGIS Pro 2.6.0. were used to create a new district boundary on a scale smaller than 1:1,000,000. For NCT of Delhi, Goa, and Andaman and Nicobar Islands, where the district-level COVID-19 data were not available, we dissolved the district boundaries into the states. Therefore, the COVID-19 metrics in these three states were presented at the state-level metrics

rather than the district-level. Overall, 720 districts, including those dissolved to states, were identified in our district shapefile.

### *PC Boundary Shapefile*

We created the PC boundary using Data{Meet}, community-created maps of India<sup>18</sup> at (<https://github.com/datameet>). The shapefile contained 543 polygons of PCs in India and was last modified and published in April 2019. Unlike districts, PC boundaries have not been altered since the Delimitation Act of 2002. To validate the accuracy of Data{Meet} shapefiles, we compared the PC boundary from Bharat Maps<sup>16</sup>. Based on the comparison, we adjusted some PC borders to align with the Bharat Maps.

### *District and PC Population Count*

We used gridded population count data published by the World Pop<sup>19</sup> to estimate the population across districts and PCs. The *India 100m Population Data* provides population estimates at 100m × 100m spatial resolution, which were developed using demographic information, land cover remote sensing imagery analysis, and dasymetric modeling. The population estimate by the WorldPop was granular enough to model the population across districts and PCs, which also accounted for the heterogeneity of population density between urban and rural areas<sup>20</sup>.

## **2.2 Methods**

We used the crosswalk<sup>13</sup> method, a type of dasymetric mapping technique, to derive PC-wise COVID-19 estimates from district-level data. (See [Figure 2](#)) In essence, if a PC spans across multiple districts, we computed the average of district indicators weighted using the population proportion in each PC, assuming that the COVID-19 metrics were uniformly distributed across the population in one district. For example, if a single PC spans across districts A and B, we first divided this PC segment into each district as segments A and B, respectively. If segment A contained 40% of the population of district A, and segment B contained 60% of district B population, the total number of cases was calculated by summing up the total cases in two districts weighted by the proportion of the population<sup>13</sup>. Similarly, within each segment, we summed the population count across 100m × 100m pixels using the WorldPop population raster data. This analysis was conducted using the ArcGIS Pro 2.6.0.

**Figure 2.** Flowchart of how to use the crosswalk to derive COVID-19 cumulative cases and deaths per 100,000 population and CFR from district-level outcomes

1. Calculate district area (dist\_area): perform 'Calculate Geometry' function on the district shapefile, using the Kalianpur 1975/India Zone IIa (EPSG: 24379) coordinate system
2. Calculate district population (dist\_pop): perform 'zonal statistics' command using district shapefile as the 'zone' and the WoldPop2020 as the data raster
3. Link each segment contained both district ID and PC ID of the overlapping over: perform 'intersect' command to district and PC shapefile, create a new shapefile called Dist\_PC\_intersect. In total, there are 3734 segments
4. Calculate segment area (seg\_area) and segment population (seg\_pop) following step 1 and 2
5. Calculate percentage of district population (Pct\_pop) in each segment by segment population dividing district population
6. Calculate percentage of district area (Pct\_area) in each segment by segment area dividing district area. Remove segments that were less than a hundredth of a percent of the original district area. Those extremely small areas are created because of the slight boundary inaccuracies between district and PC shapefiles. A hundredth is chosen as a conservative threshold. There remain 3,548 segments in the intersected shapefile
7. Calculate number of confirmed and death cases in each segment: multiply number of confirmed and death cases in the district by percentage of district population in the given segment
8. Calculate PC level confirmed and death cases, and population estimate: aggregated segment level confirmed and death cases, and population by PC ID
9. Calculate PC level confirmed cases per 100,000, deaths per 100,000 and CFR

## 2.3 Analysis

We considered three COVID-19 metrics: cases per 100,000, deaths per 100,000, and the CFR.

Absolute counts on cases and deaths are also available in supplementary materials. All metrics were cumulative. We computed cases per 100,000 by dividing the estimated PC-wise count of confirmed cases by the population count of the PC and multiplying by 100,000. Similarly, deaths per 100,000 were calculated as the number of deaths divided by the population, multiplied by

100,000. CFR was calculated by dividing the number of cases by the number of deaths, multiplied by 100. We classified the PCs into deciles from the highest metrics (i.e., the highest burden) to the lowest metrics (i.e., the lowest burden). We also presented descriptive statistics across all PCs nationally and within each state. We adopted boxplots to show the interquartile range (IQR) of metrics within the states for a visual representation of COVID-19 burden across India. This analysis was conducted using R version 4.0.2.

### 3. RESULTS

The total number of PCs after excluding the districts without appropriate data was 543. In the following section, we present COVID-19 cases per 100,000, deaths per 100,000, and the case fatality rate across 543 PCs as of October 18th. All metrics are cumulative. The same metrics across 720 districts of India are shown in the appendix.

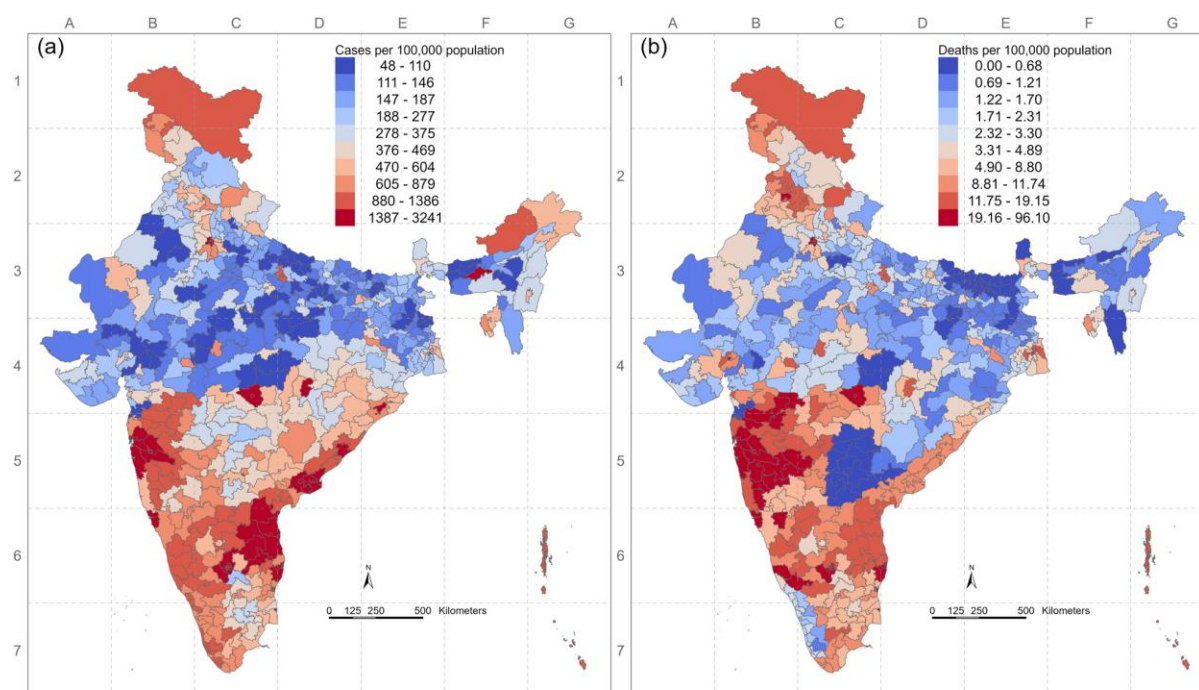
#### 3.1 Distribution of COVID-19 Cumulative Cases per Capita

[Table 1](#) shows the distribution in decile for both PC and district level. Cumulative cases per 100,000 population ranged from 0 to 3,241 with a mean of 568 per 100,000. States with PCs ranked in the top decile with the highest number of cumulative cases per capita are Maharashtra (16 PCs/ total PCs: 48), Andhra Pradesh (13 PCs/ total PCs: 25), Delhi (7 PCs/ total PCs: 7), Tamil Nadu (5 PCs/ total PCs: 39), Karnataka (5 PCs/ total PCs: 28). States with PCs ranked in the bottom decile were Uttar Pradesh (19 PCs/ total PCs: 80), Madhya Pradesh (10 PCs/ total PCs: 29), Gujarat (5 PCs/ total PCs: 26), Rajasthan (5 PCs/ total PCs: 25) ([Figure 3 a](#)).

**Table 1.** Decile PCs/districts for Cases per 100,000, Deaths per 100,000 and CFR (%) until October 18, 2020.

	PC			District		
	Cases per 100,000	Deaths per 100,000	CFR (%)	Cases per 100,000	Deaths per 100,000	CFR (%)
Decile 1	0-110	0.00-0.68	0.00-0.31	0-84	0.00-0.00	0.00-0.00
Decile 2	111-145	0.69-1.21	0.32-0.56	85-120	0.01-0.54	0.01-0.27
Decile 3	146-183	1.22-1.69	0.57-0.81	121-160	0.55-0.92	0.28-0.50
Decile 4	184-263	1.70-2.30	0.82-1.02	161-212	0.93-1.43	0.51-0.73
Decile 5	264-371	2.31-3.24	1.03-1.21	213-287	1.44-2.05	0.74-0.93
Decile 6	372-466	3.25-4.82	1.22-1.37	288-387	2.06-2.95	0.94-1.17
Decile 7	467-596	4.83-8.72	1.38-1.60	388-493	2.96-4.48	1.18-1.43
Decile 8	597-865	8.73-11.70	1.61-1.88	494-632	4.49-7.64	1.44-1.72
Decile 9	866-1377	11.71-19.06	1.89-2.45	633-939	7.65-12.69	1.73-2.23
Decile 10	1378-3241	19.07-96.10	2.46-4.65	940-3908	12.70-96.10	2.24-8.85



**Figure 3.** COVID-19 metrics across PCs in India. (a) Cases per 100,000; (b) Deaths per 100,000

Note: The color gradient of darkest blue to darkest red represents the decile distribution from the lowest to the highest on the cases/deaths per 100,000 population.

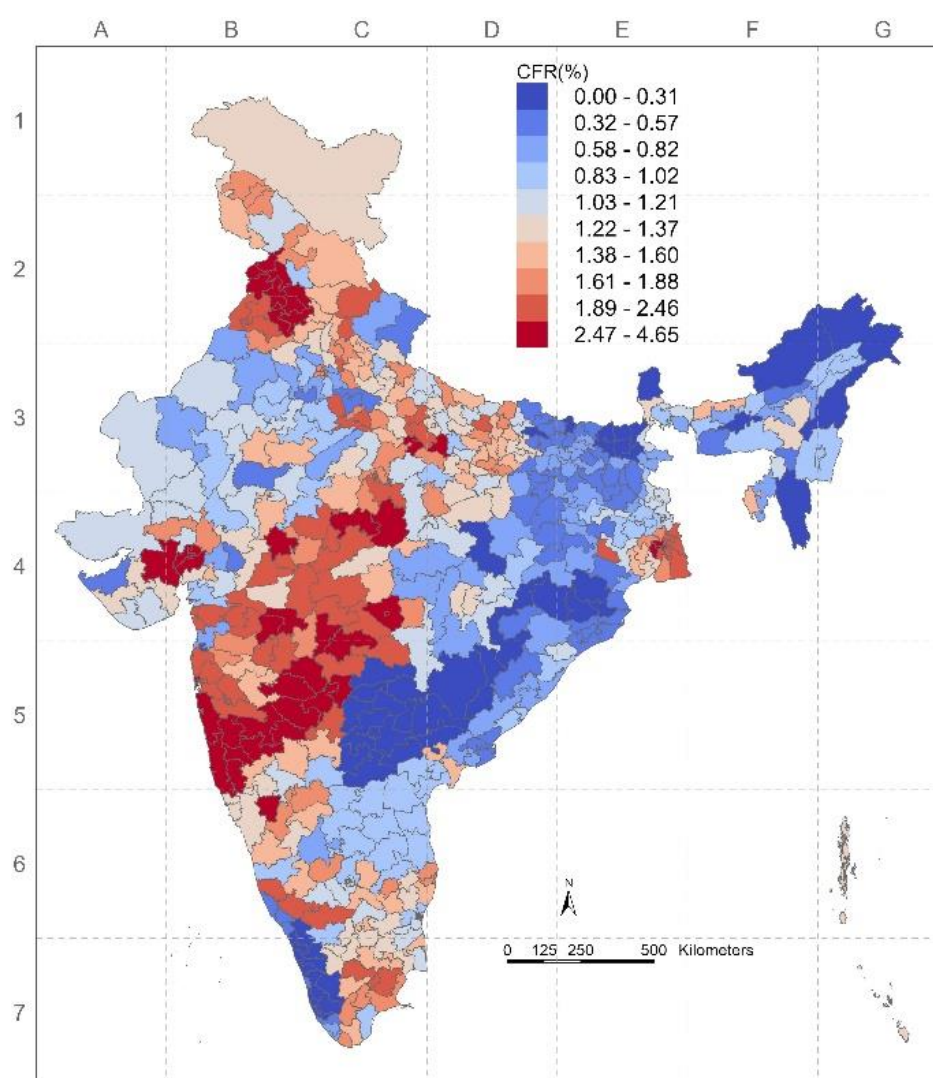
### 3.2 Distribution of COVID-19 Cumulative Deaths per Capita

Cumulative deaths per 100,000 population varied between 0 and 96 with a mean of 8.5. States with PCs ranked in the top decile with a highest number of cumulative deaths per capita were Maharashtra (28 PCs/ total PCs: 48), Karnataka (7 PCs/ total PCs: 28), Delhi<sup>1</sup> (7 PCs/ total PCs: 7), Tamil Nadu (5 PCs/ total PCs: 39). States with PCs ranked in the bottom decile were Bihar (22 PCs/ total PCs: 40), Telangana (16 PCs/ total PCs: 17), Jharkhand (3 PCs/ total PCs: 14), Assam (2 PCs/ total PCs: 14). (Figure 3 b)

### 3.3 Distribution of COVID-19 Case Fatality Rate

The CFR ranged from 0% to 4.65 % with a mean of 1.31% at PC level. States with PCs ranked in the top decile with the highest CFR were Maharashtra (27 PCs/ total PCs: 48), Punjab (10 PCs/ total PCs: 13), Gujarat (5 PCs/ total PCs: 26), West Bengal (5 PCs/ total PCs: 42). States with PCs ranked in the bottom decile were Telangana (17 PCs/ total PCs: 17), Kerala (13 PCs/ total PCs: 20), Bihar (8 PCs/ total PCs: 40), Odisha (7 PCs/ total PCs: 21). (Figure 4)

**Figure 4.** COVID-19 case fatality rate (%) across PCs

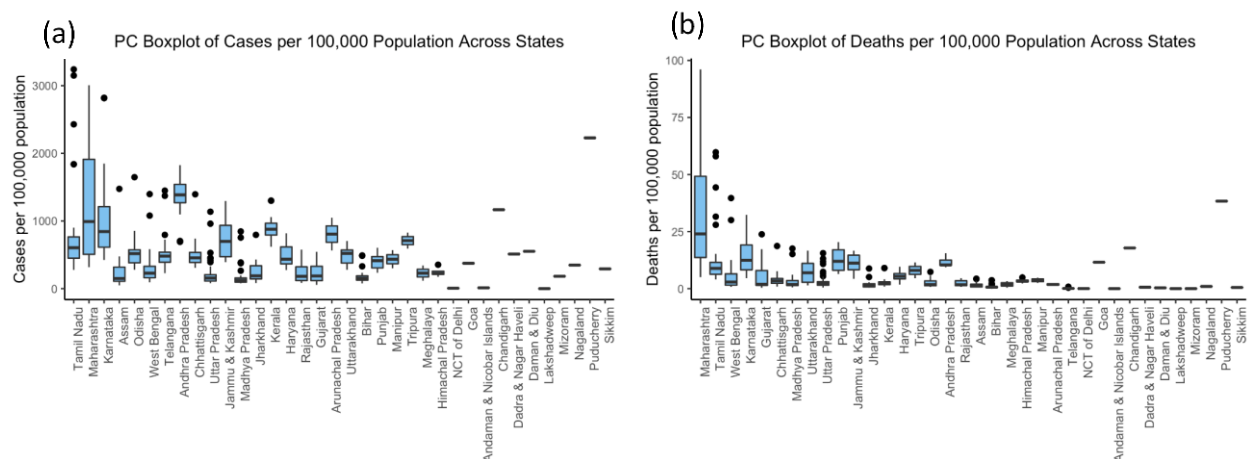


### 3.4 Variability across Districts and PCs by state

We found a substantial variation in cases and deaths per 100,000 population across PC and district within states (Figure 5 a,b). However, the degree of variation across the PCs differed by states and union territories. For example, Kamrup Metropolitan had the highest cumulative cases per 100,000 population, both in Assam and all India. Assam had the highest variance for cases per population in India (min: 10, max: 3898, mean: 275, n = 33) among all states.

Comparing the variance across the districts and PCs, we observed a larger variation in COVID-19 outcomes across PCs than districts. The standard deviation of cases per population at the PC-level was 588, while for districts it was 471. Similarly, the standard deviation of deaths per capita across PCs was 14, while across districts was 8.6.

**Figure 5.** Boxplot of COVID-19 for PCs within states for (a) cumulative cases per 100,000, (b) cumulative deaths per 100,000 residents



## 4. DISCUSSION

In this study, we showed a COVID-19 monitoring framework across 543 PCs and 720 districts in India. As we aimed to present the first set of COVID-19 metrics at the PC-level, the results presented in this paper can guide policy directions. First, we found a substantial variation across the PCs and districts, even within each state. For instance, the range of PC-wise cases per 100,000 varied from 317 to 3,005 in Maharashtra, the state with the highest COVID-19 burden as of mid-October. This pattern also appeared in Karnataka. Such wide variation across the PCs and districts within the states showed that targeted interventions at geographic levels below the state are needed. Second, we found different geographic distribution between the three metrics, which suggests that all three metrics should be considered in resource allocation and reopening decisions. For instance, the medians PC-wise COVID-19 cases and deaths per 100,000 were similar between Karnataka and Maharashtra, however deaths per 100,000 were much lower in Karnataka than in Maharashtra. While more information should be examined, this could suggest that more health care resources such as intensive care unit (ICU) facilities are needed in Maharashtra.

While this is the first study to show three COVID-19 metrics at the PC level in India, there exist limitations that stem from the data sources used for analysis and the estimation method. First, our district-level data source, covid19India.org, is a non-official opensource website, by which the data input could be inaccurate, and could not be confirmed or validated. Nevertheless, we chose this data source for two reasons. First, this was the only choice available for COVID-19 data at the district-level in India. Second, previous studies have shown that such crowd-sourced data agrees well with official data and is more up-to-date compared to official information<sup>3</sup>. The second limitation originates from the crosswalk method used to derive PC-level estimates. This

method assumes that the COVID-19 cases and deaths were uniformly distributed within the district and are proportional to population. Although it is impossible to validate this assumption, we adopted population count estimates that are granular enough to exhibit heterogeneity among urban and rural areas<sup>20</sup>.

Despite such limitation, COVID-19 metrics at the PC level has direct utility for the policymakers. PCs are important geography as a major part of the funding, and guidance is still provided by the national government through centrally sponsored schemes, such as the National Health Mission and Prime Ministers Jan Arogya Yojana. Access to PC-level COVID-19 data can help MPs determine which bills to push for, effectively communicate the scale of the crisis to their constituents, and design social distancing policies that are needed to be enforced. Such data can also allow MPs to learn from the experience of other PCs. Equally important, access to such data can inform constituents to engage with their MPs and evaluate the performance of the central government.

In addition, districts could serve as a central geographical unit for the implementation of COVID-19 policies. Districts in India have a dedicated funding mechanism based on State Finance Commissions' recommendations under Article 243I, which recommends principles for sharing of revenues within each state. Through such mechanisms, having COVID-19 estimates at the district level can facilitate such administrative functions and guide hotspots targeting and the allocation of critical resources. Therefore, considering the PC- and district-wise burden of COVID-19 simultaneously could guide policies from design to implementation.

In conclusion, we established a national monitoring system to track COVID-19 statistics across PCs and districts in India. We aimed to present the first set of metrics of COVID-19 at these geographic scales and provide a methodological flow chart for such a monitoring scheme. This study could enhance the geographic precision of COVID-19 data in India for evidence-based assessment of safe reopening policies.

## 5. REFERENCES

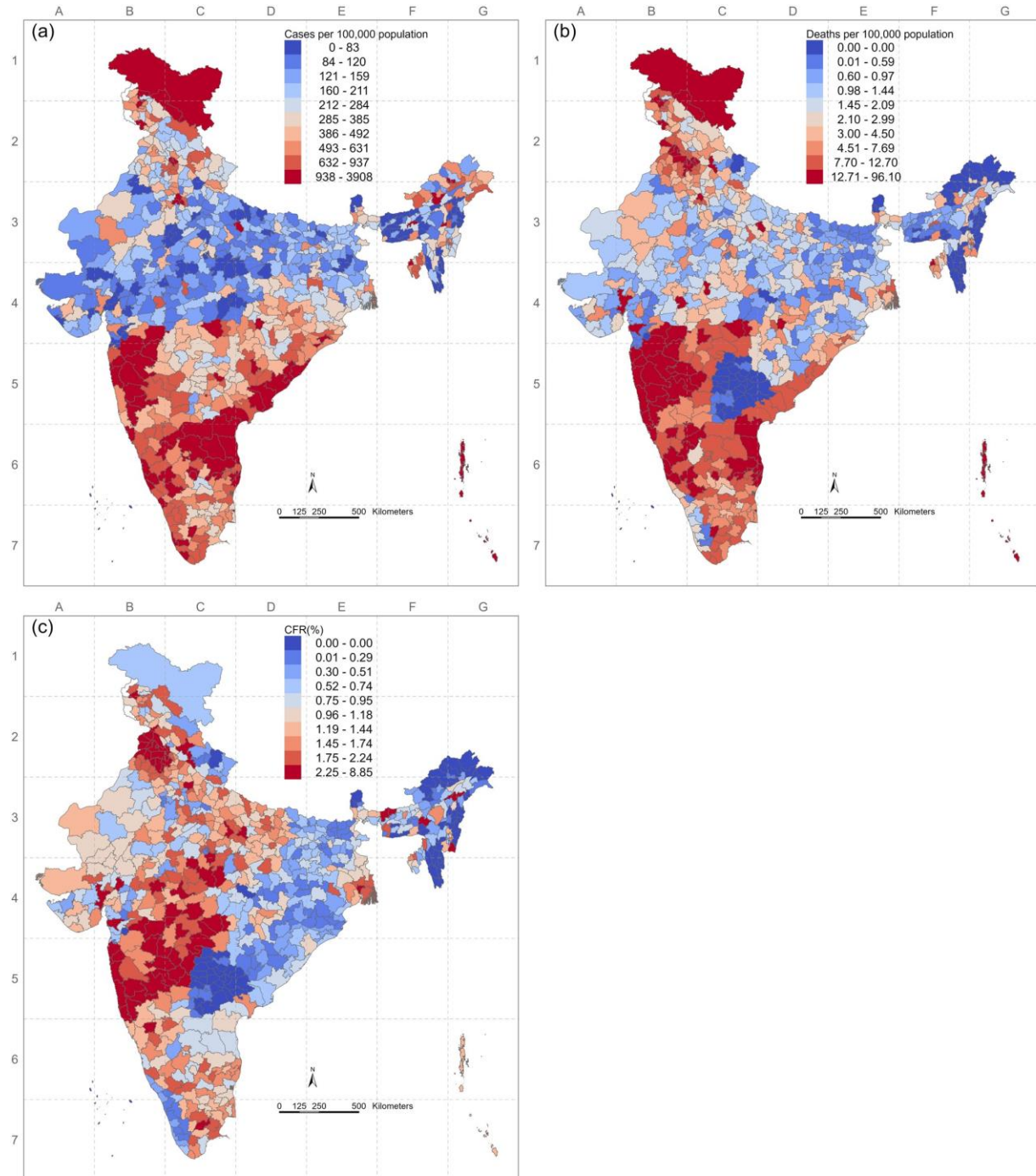
1. Cucinotta, D., & Vanelli, M. (2020). WHO declares COVID-19 a pandemic. *Acta bio-medica: Atenei Parmensis*, 91(1), 157–160. <https://doi.org/10.23750/abm.v91i1.93970>
2. Worldometer. (2020). COVID-19 coronavirus pandemic. <https://www.worldometers.info/coronavirus/> (Last accessed, September 22nd, 2020)
3. Zhang, W., Kim, R., Subramanian, S. V. (2020, July 14th). Crowdsourcing for robust, real-time COVID-19 data. *Nature India*. <https://doi.org/10.1038/nindia.2020.109>
4. Dutta, S. S. (2020, June 8th). 15–30% people in containment areas exposed to COVID-19: ICMR's serosurvey. *New Indian Express*. <https://www.newindianexpress.com/nation/2020/jun/08/15-30-people-in-containmentareas-exposed-to-covid-19-icmrs-serosurvey-2153893.html> (Last accessed September 22nd, 2020)
5. World Bank. (2020). Projected poverty impacts of COVID-19 (coronavirus). <http://pubdocs.worldbank.org/en/461601591649316722/Projected-poverty-impacts-ofCOVID-19.pdf>
6. Srivastava, A., Tamrakar, V., Moradhvaj, M., Akhtar, S.N., Kumar, K., Saini, T.C., Nagendra, C. and Saikia, N., 2020. Geographical Variation in COVID-19 Cases, Prevalence, Recovery and Fatality Rate by Phase of National Lockdown in India, March 14-May 29, 2020. medRxiv.
7. Subramanian, S.V., Karlsson, O., Zhang, W. and Kim, R., 2020. Geo-mapping of COVID-19 Risk Correlates Across Districts and Parliamentary Constituencies in India. *Harvard Data Science Review*.
8. deSouza, Priyanka N, and S. V. Subramanian. 2020. "COVID-19 across United States congressional districts." *Journal of Global Health Science*.

9. Rolheiser , Lyndsey A., Jack Cordes, and S. V. Subramanian. 2018. "Opioid Prescribing Rates by Congressional Districts, United States, 2016." *American Journal of Public Health*.
10. Centers for Disease Control and Prevention. 2020. Indicators for Dynamic School Decision-Making. <https://www.cdc.gov/coronavirus/2019-ncov/community/schools-childcare/indicators.html>. Last accessed November 16th, 2020
11. District Planning Committee (DPC). 2007. "243-ZD. Committee for district planning." *Artical*. Accessed November 16th, 2020. <http://www.sanchitha.ikm.in/node/2489>.
12. The Delimitation Act, 2002, Legislative Department. June 3rd. [http://legislative.gov.in/sites/default/files/09\\_Delimitation%20act%2C%202002.pdf](http://legislative.gov.in/sites/default/files/09_Delimitation%20act%2C%202002.pdf). Last accessed September 22nd, 2020
13. Swaminathan, A., Kim, R., Xu, Y., Blossom, J. C., Venkatraman, R., Kumar, A., & Subramanian, S. V. (2019). Burden of child malnutrition in India: A view from Parliamentary Constituencies. *Economic & Political Weekly*, 54(2), 44–52. <https://pdfs.semanticscholar.org/6125/3cef1b2b1df0d203d7ec692248b4794f65db.pdf>
14. Covid19india. 2020. Covid19india. August 4th. <https://github.com/covid19india/covid19india-react/tree/master/public/maps>.
15. ML Infomap. 2016. "ML InfoMap." India Historical Administrative Districts. Accessed 11 01, 2020. <https://mlinfomap.com/>.
16. Ministry of Electronics & Information Technology, National Informatics Centre. 2020. Bharat Maps. August. <https://bharatmaps.gov.in/>.
17. Reserve Bank of India. 2020. Reserve Bank of India. August. <https://www.rbi.org.in/Scripts/NotificationUser.aspx>.
18. Data{Meet}. 2019. Community Created Maps of India. <http://projects.datameet.org/maps>
19. WorldPop ([www.worldpop.org](http://www.worldpop.org) - School of Geography and Environmental Science, University of Southampton). 2017. "India 100m population. Version 2.0." WorldPop. Accessed August 2020. DOI: 10.5258/SOTON/WP00532.
20. Blossom, Jeffrey C., Akshay Swaminathan, William Joe, Rockli Kim, and S. V. Subramanian. 2019. "Robust Parliamentary Constituency Estimates : Geographic Data Science Approaches." *Economic & Political Weekly*, May 11th: 66-70.

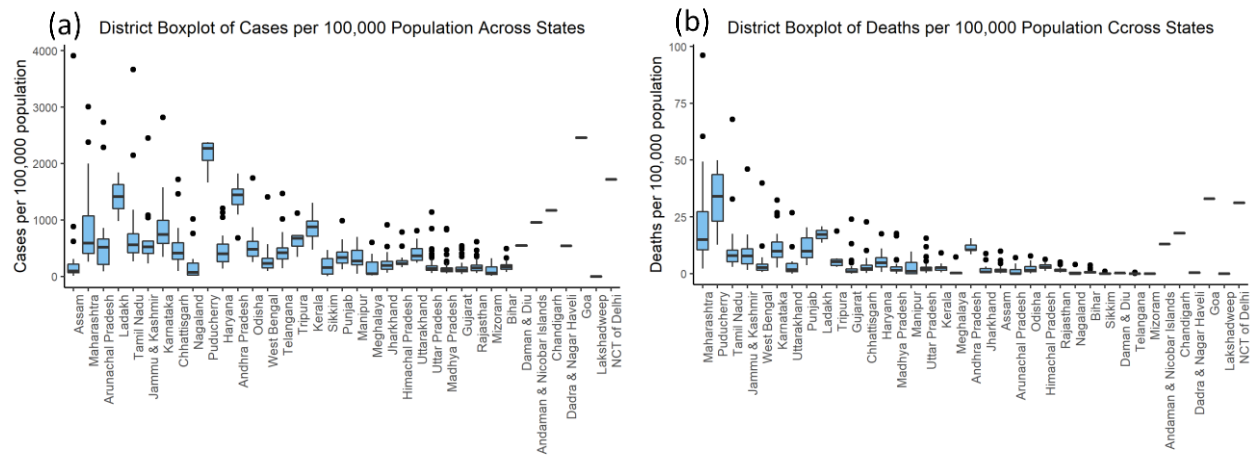


## Supplementary Materials

**S. Figure 1.** COVID-19 cases across Districts. (a) Cases per 100,000; (b) Deaths per 100,000 (c) CFR (%)



**S. Figure 2.** Boxplot of COVID-19 for districts within states for (a) cumulative cases per 100,000, (b) cumulative deaths per 100,000 residents



**S. Table 1.** COVID-19 Metrics for PCs

State Name	PC Name	Case Count	Cases per 100,000	Decile Cases per 100,000	Death count	Deaths per 100,000	Decile Deaths per 100,000	CFR (%)	Decile CFR
Andaman & Nicobar Islands	Andaman & Nicobar	3185	953	9	43	12.994	9	1.363	6
Andhra Pradesh	Amalapuram (SC)	33673	1824	10	189	10.249	8	0.562	2
Andhra Pradesh	Anakapalle	27147	1116	9	244	10.036	8	0.899	4
Andhra Pradesh	Anantapur	32212	1341	9	277	11.523	8	0.86	4
Andhra Pradesh	Araku (ST)	32016	1386	10	218	9.419	8	0.68	3
Andhra Pradesh	Bapatla (SC)	27858	1295	9	269	12.489	9	0.965	4
Andhra Pradesh	Chittoor (SC)	33415	1540	10	337	15.541	9	1.009	4
Andhra Pradesh	Eluru	33969	1446	10	244	10.395	8	0.719	3
Andhra Pradesh	Guntur	23396	1097	9	219	10.275	8	0.937	4
Andhra Pradesh	Hindupur	29888	1339	9	257	11.525	8	0.861	4
Andhra Pradesh	Kadapa	35702	1514	10	295	12.512	9	0.827	4
Andhra Pradesh	Kakinada	41232	1819	10	220	9.7	8	0.533	2
Andhra Pradesh	Kurnool	27106	1270	9	221	10.371	8	0.817	4
Andhra Pradesh	Machilipatnam	17066	691	8	256	10.355	8	1.498	7
Andhra Pradesh	Nandyal	31485	1272	9	257	10.393	8	0.817	4
Andhra Pradesh	Narasaraopet	26963	1098	9	252	10.286	8	0.936	4
Andhra Pradesh	Narsapuram	28172	1708	10	172	10.428	8	0.611	3
Andhra Pradesh	Nellore	37041	1691	10	314	14.333	9	0.847	4
Andhra Pradesh	Ongole	33061	1452	10	324	14.239	9	0.98	4
Andhra Pradesh	Rajahmundry	42266	1770	10	240	10.045	8	0.568	2
Andhra Pradesh	Rajampet	32622	1533	10	302	14.199	9	0.926	4
Andhra Pradesh	Srikakulam	28599	1377	9	226	10.856	8	0.789	3
Andhra Pradesh	Tirupati (SC)	48619	1650	10	440	14.931	9	0.905	4
Andhra Pradesh	Vijayawada	14965	704	8	218	10.258	8	1.457	7
Andhra Pradesh	Visakhapatnam	24571	1170	9	205	9.765	8	0.834	4
Andhra Pradesh	Vizianagaram	30927	1423	10	204	9.386	8	0.66	3

COVID-19 Metrics across Parliamentary Constituencies and Districts in India

Arunachal Pradesh	Arunachal East	4075	564	7	9	1.276	3	0.226	1
Arunachal Pradesh	Arunachal West	9109	1048	9	21	2.362	5	0.225	1
	Autonomous District (ST)	966	71	1	12	0.892	2	1.249	6
Assam	Barpeta	2591	99	1	18	0.701	2	0.709	3
Assam	Dhubri	2325	77	1	19	0.636	1	0.828	4
Assam	Dibrugarh	10624	477	7	97	4.352	6	0.912	4
Assam	Gauhati	49504	1474	10	141	4.21	6	0.286	1
Assam	Jorhat	7146	350	5	71	3.458	6	0.989	4
Assam	Kaliabor	7954	320	5	50	1.992	4	0.623	3
Assam	Karimganj (SC)	3144	141	2	35	1.561	3	1.104	5
Assam	Kokrajhar (ST)	1398	48	1	20	0.68	2	1.412	7
Assam	Lakhimpur	5946	210	4	49	1.741	4	0.829	4
Assam	Mangaldoi	4169	143	2	35	1.205	2	0.844	4
Assam	Nowgong	4821	147	3	29	0.88	2	0.598	3
Assam	Silchar	5898	312	5	33	1.752	4	0.562	2
Assam	Tezpur	3709	152	3	16	0.671	1	0.44	2
Bihar	Araria	6088	193	4	17	0.535	1	0.278	1
Bihar	Arrah	4467	144	2	34	1.102	2	0.767	3
Bihar	Aurangabad	3601	133	2	18	0.668	1	0.502	2
Bihar	Banka	4186	146	3	23	0.791	2	0.541	2
Bihar	Begusarai	6636	197	4	27	0.805	2	0.409	2
Bihar	Bhagalpur	6738	235	4	54	1.88	4	0.801	3
Bihar	Buxar	4938	169	3	21	0.715	2	0.423	2
Bihar	Darbhanga	2219	77	1	16	0.554	1	0.722	3
Bihar	Gaya (SC)	3625	125	2	27	0.919	2	0.734	3
Bihar	Gopalganj (SC)	4746	162	3	3	0.116	1	0.071	1
Bihar	Hajipur (SC)	3465	118	2	27	0.911	2	0.774	3
Bihar	Jahanabad	6151	227	4	25	0.936	2	0.412	2
Bihar	Jamui (SC)	5548	181	3	25	0.807	2	0.447	2
Bihar	Jhanjharpur	4393	132	2	14	0.415	1	0.313	2
Bihar	Karakat	4428	158	3	19	0.674	1	0.428	2
Bihar	Katihar	5254	179	3	9	0.319	1	0.178	1
Bihar	Khagaria	4661	161	3	16	0.561	1	0.348	2
Bihar	Kishanganj	5326	188	4	14	0.478	1	0.254	1
Bihar	Madhepura	7044	211	4	14	0.405	1	0.192	1
Bihar	Madhubani	3168	111	2	13	0.465	1	0.418	2
Bihar	Maharajganj	3370	123	2	19	0.683	2	0.554	2
Bihar	Munger	10244	330	5	70	2.264	4	0.687	3
Bihar	Muzaffarpur	4620	167	3	17	0.621	1	0.372	2
Bihar	Nalanda	6776	204	4	46	1.373	3	0.673	3
Bihar	Nawada	4238	149	3	20	0.708	2	0.476	2
Bihar	Paschim Champaran	3285	123	2	14	0.533	1	0.434	2
Bihar	Pataliputra	15998	491	7	120	3.679	6	0.75	3
Bihar	Patna Sahib	11254	485	7	85	3.646	6	0.751	3
Bihar	Purnia	6873	199	4	9	0.258	1	0.13	1
Bihar	Purvi Champaran	3678	127	2	19	0.653	1	0.514	2
Bihar	Samastipur (SC)	2454	90	1	17	0.611	1	0.68	3
Bihar	Saran	3539	134	2	21	0.779	2	0.581	3
Bihar	Sasaram (SC)	4307	139	2	25	0.795	2	0.572	3
Bihar	Sheohar	3618	134	2	12	0.454	1	0.338	2
Bihar	Sitamarhi	2953	89	1	9	0.273	1	0.307	1
Bihar	Siwan	3080	106	1	16	0.539	1	0.507	2

COVID-19 Metrics across Parliamentary Constituencies and Districts in India

Bihar	Supaul	5567	183	3	13	0.433	1	0.236	1
Bihar	Ujiarpur	2567	99	1	18	0.68	2	0.685	3
Bihar	Vaishali	5269	157	3	23	0.674	1	0.428	2
Bihar	Valmiki Nagar	3879	118	2	13	0.382	1	0.324	2
Chandigarh	Chandigarh	13415	1166	9	205	17.817	9	1.528	7
Chhattisgarh	Bastar (ST)	17823	738	8	50	2.054	4	0.278	1
Chhattisgarh	Bilaspur	12254	467	7	93	3.546	6	0.759	3
Chhattisgarh	Durg	16542	571	7	221	7.643	7	1.338	6
Chhattisgarh	Janjgir-Champa (SC)	11219	419	6	116	4.319	6	1.03	5
Chhattisgarh	Kanker (ST)	9848	406	6	62	2.549	5	0.627	3
Chhattisgarh	Korba	9287	367	5	22	0.864	2	0.236	1
Chhattisgarh	Mahasamund	8289	318	5	88	3.363	6	1.056	5
Chhattisgarh	Raigarh (ST)	12181	455	6	122	4.574	6	1.005	4
Chhattisgarh	Raipur	40781	1394	10	546	18.672	9	1.339	6
Chhattisgarh	Rajnandgaon	13595	499	7	78	2.86	5	0.573	3
Chhattisgarh	Surguja (ST)	8303	307	5	49	1.813	4	0.591	3
Dadra and Nagar	Dadra & Nagar Haveli	1519	511	7	2	0.601	1	0.118	1
Daman and Diu	Daman & Diu	1593	551	7	1	0.343	1	0.062	1
NCT of Delhi	Chandni Chowk	40566	1716	10	736	31.157	10	1.815	8
NCT of Delhi	East Delhi	36619	1716	10	665	31.15	10	1.815	8
NCT of Delhi	New Delhi	50514	1716	10	917	31.157	10	1.815	8
NCT of Delhi	North East Delhi	48229	1702	10	873	30.828	10	1.811	8
NCT of Delhi	North West Delhi (SC)	60202	1709	10	1092	30.995	10	1.813	8
NCT of Delhi	South Delhi	35297	1715	10	640	31.119	10	1.814	8
NCT of Delhi	West Delhi	55474	1714	10	1006	31.098	10	1.814	8
Goa	North Goa	20022	2453	10	269	32.896	10	1.341	6
Goa	South Goa	20476	2458	10	274	32.947	10	1.34	6
Gujarat	Ahmedabad East	4371	340	5	151	11.743	8	3.453	10
Gujarat	Ahmedabad West (SC)	18251	512	7	849	23.817	10	4.65	10
Gujarat	Amreli	3582	153	3	40	1.698	3	1.107	5
Gujarat	Anand	1304	55	1	16	0.688	2	1.253	6
Gujarat	Banaskantha	2033	71	1	22	0.77	2	1.085	5
Gujarat	Bardoli (ST)	17695	378	6	415	8.868	8	2.345	9
Gujarat	Bharuch	5023	202	4	44	1.762	4	0.873	4
Gujarat	Bhavnagar	3951	149	3	54	2.028	4	1.358	6
Gujarat	Chhota Udaipur (ST)	5354	173	3	56	1.805	4	1.046	5
Gujarat	Dahod (ST)	2154	103	1	8	0.375	1	0.364	2
Gujarat	Gandhinagar	8997	419	6	371	17.298	9	4.126	10
Gujarat	Jamnagar	8119	347	5	39	1.66	3	0.478	2
Gujarat	Junagadh	3597	154	3	41	1.745	4	1.134	5
Gujarat	Kachchh (SC)	3012	113	2	36	1.37	3	1.207	5
Gujarat	Kheda	6738	232	4	274	9.415	8	4.059	10
Gujarat	Mahesana	3628	164	3	40	1.816	4	1.109	5
Gujarat	Navsari	3879	225	4	75	4.343	6	1.927	9
Gujarat	Panchmahal	3108	97	1	22	0.693	2	0.716	3
Gujarat	Patan	3230	135	2	53	2.234	4	1.654	8
Gujarat	Porbandar	6750	240	4	82	2.911	5	1.213	6
Gujarat	Rajkot	7858	302	5	100	3.823	6	1.268	6
Gujarat	Sabarkantha	2104	76	1	35	1.269	3	1.67	8
Gujarat	Surat	10921	544	7	264	13.125	9	2.414	9
Gujarat	Surendranagar	9224	253	4	315	8.665	7	3.419	10
Gujarat	Vadodara	8944	403	6	127	5.742	7	1.423	7
Gujarat	Valsad (ST)	1755	73	1	12	0.49	1	0.672	3

COVID-19 Metrics across Parliamentary Constituencies and Districts in India

Haryana	Ambala (SC)	18762	654	8	275	9.568	8	1.463	7
Haryana	Bhiwani-mahendragarh	7535	286	5	47	1.8	4	0.629	3
Haryana	Faridabad	26265	819	8	267	8.32	7	1.016	4
Haryana	Gurgaon	31499	838	8	249	6.612	7	0.789	3
Haryana	Hisar	9541	357	5	121	4.544	6	1.273	6
Haryana	Karnal	15473	502	7	208	6.734	7	1.341	6
Haryana	Kurukshetra	11207	394	6	178	6.245	7	1.585	7
Haryana	Rohtak	12368	452	6	116	4.248	6	0.939	4
Haryana	Sirsa (SC)	7948	273	5	133	4.574	6	1.676	8
Haryana	Sonipat	10737	423	6	76	2.984	5	0.705	3
Himachal Pradesh	Hamirpur	4289	226	4	43	2.254	4	0.997	4
Himachal Pradesh	Kangra	3395	174	3	62	3.196	5	1.834	8
Himachal Pradesh	Mandi	4227	223	4	63	3.342	6	1.5	7
Himachal Pradesh	Shimla (SC)	7162	353	5	99	4.886	6	1.383	7
Jammu & Kashmir	Anantnag	12837	428	6	221	7.361	7	1.72	8
Jammu & Kashmir	Baramulla	13254	605	8	247	11.294	8	1.867	8
Jammu & Kashmir	Jammu	23079	791	8	324	11.089	8	1.403	7
Jammu & Kashmir	Ladakh	5569	1295	9	68	15.752	9	1.216	6
Jammu & Kashmir	Srinagar	26627	983	9	451	16.661	9	1.696	8
Jammu & Kashmir	Udhampur	12185	391	6	135	4.32	6	1.104	5
Jharkhand	Chatra	3458	145	2	18	0.732	2	0.506	2
Jharkhand	Dhanbad	6261	193	4	73	2.261	4	1.171	5
Jharkhand	Dumka (ST)	2463	82	1	13	0.434	1	0.529	2
Jharkhand	Giridih	5045	184	3	48	1.756	4	0.956	4
Jharkhand	Godda	3870	141	2	21	0.775	2	0.551	2
Jharkhand	Hazaribagh	7574	430	6	49	2.758	5	0.642	3
Jharkhand	Jamshedpur	15651	429	6	321	8.81	8	2.054	9
Jharkhand	Khunti (ST)	6659	333	5	25	1.248	3	0.375	2
Jharkhand	Kodarma	5901	180	3	36	1.11	2	0.618	3
Jharkhand	Lohardaga (ST)	6739	339	5	33	1.676	3	0.494	2
Jharkhand	Palamu (SC)	4753	143	2	22	0.649	1	0.453	2
Jharkhand	Rajmahal (ST)	2830	100	1	14	0.487	1	0.486	2
Jharkhand	Ranchi	19532	794	8	125	5.097	7	0.642	3
Jharkhand	Singbhum (ST)	5537	246	4	39	1.742	4	0.707	3
Karnataka	Bagalkot	15290	613	8	164	6.581	7	1.074	5
Karnataka	Bangalore Central	79949	2820	10	916	32.318	10	1.146	5
Karnataka	Bangalore North	84793	2815	10	972	32.263	10	1.146	5
Karnataka	Bangalore Rural	73658	1847	10	843	21.137	10	1.144	5
Karnataka	Bangalore South	59045	2820	10	677	32.32	10	1.146	5
Karnataka	Belgaum	10144	437	6	138	5.957	7	1.364	6
Karnataka	Bellary (ST)	31961	1230	9	455	17.524	9	1.425	7
Karnataka	Bidar	11120	424	6	232	8.829	8	2.082	9
Karnataka	Bijapur (SC)	11668	467	6	186	7.454	7	1.595	7
Karnataka	Chamarajanagar (SC)	24569	931	9	488	18.488	9	1.986	9
Karnataka	Chikkballapur	38553	1454	10	384	14.496	9	0.997	4
Karnataka	Chikkodi	11178	441	6	156	6.13	7	1.391	7
Karnataka	Chitradurga (SC)	15094	597	7	115	4.551	6	0.762	3
Karnataka	Dakshina Kannada	30286	1209	9	646	25.784	10	2.132	9
Karnataka	Davanagere	19210	1012	9	250	13.193	9	1.303	6
Karnataka	Dharwad	21640	879	9	572	23.227	10	2.644	10
Karnataka	Gulbarga (SC)	17312	653	8	247	9.341	8	1.43	7
Karnataka	Hassan	25778	1109	9	385	16.551	9	1.493	7
Karnataka	Haveri	15388	649	8	247	10.408	8	1.604	8

COVID-19 Metrics across Parliamentary Constituencies and Districts in India

Karnataka	Kolar (SC)	11724	515	7	176	7.732	7	1.5	7
Karnataka	Koppal	19828	808	8	355	14.457	9	1.789	8
Karnataka	Mandya	18729	806	8	209	8.991	8	1.116	5
Karnataka	Mysore	26870	1138	9	517	21.877	10	1.922	9
Karnataka	Raichur (ST)	16729	644	8	152	5.856	7	0.91	4
Karnataka	Shimoga	23388	906	9	363	14.069	9	1.552	7
Karnataka	Tumkur	12848	610	8	215	10.199	8	1.671	8
Karnataka	Udupi Chikmagalur	23944	1218	9	229	11.645	8	0.956	4
Karnataka	Uttara Kannada	14752	659	8	188	8.414	7	1.277	6
Kerala	Alappuzha	17301	972	9	52	2.913	5	0.3	1
Kerala	Alathur (SC)	12789	713	8	31	1.722	4	0.242	1
Kerala	Attingal	25369	1299	9	176	8.989	8	0.692	3
Kerala	Chalakudy	19364	867	8	58	2.579	5	0.297	1
Kerala	Ernakulam	12447	916	9	39	2.867	5	0.313	2
Kerala	Idukki	11398	619	8	24	1.326	3	0.214	1
Kerala	Kannur	13364	693	8	54	2.821	5	0.407	2
Kerala	Kasaragod	19922	1027	9	80	4.104	6	0.4	2
Kerala	Kollam	15545	861	8	51	2.848	5	0.331	2
Kerala	Kottayam	15614	826	8	33	1.758	4	0.213	1
Kerala	Kozhikode	20124	1058	9	60	3.147	5	0.297	1
Kerala	Malappuram	20616	889	9	59	2.561	5	0.288	1
Kerala	Mavelikkara (SC)	19177	913	9	57	2.718	5	0.298	1
Kerala	Palakkad	12968	661	8	29	1.456	3	0.22	1
Kerala	Pathanamthitta	16880	910	9	16	0.843	2	0.093	1
Kerala	Ponnani	15718	860	8	44	2.418	5	0.281	1
Kerala	Thiruvananthapuram	24446	1301	9	170	9.04	8	0.695	3
Kerala	Thrissur	15578	777	8	41	2.054	4	0.264	1
Kerala	Vadakara	16678	965	9	53	3.092	5	0.32	2
Kerala	Wayanad	16380	797	8	36	1.759	4	0.221	1
Lakshadweep	Lakshadweep	0	0	1	0	0	1	NA	NA
Madhya Pradesh	Balaghat	2351	90	1	14	0.527	1	0.589	3
Madhya Pradesh	Betul (ST)	3991	141	2	86	3.036	5	2.154	9
Madhya Pradesh	Bhind (SC)	3407	120	2	39	1.357	3	1.135	5
Madhya Pradesh	Bhopal	22667	754	8	455	15.157	9	2.009	9
Madhya Pradesh	Chhindwara	2172	91	1	34	1.438	3	1.584	7
Madhya Pradesh	Damoh	3520	120	2	103	3.527	6	2.927	10
Madhya Pradesh	Dewas (SC)	2755	106	1	45	1.724	4	1.625	8
Madhya Pradesh	Dhar (ST)	8394	264	4	161	5.048	7	1.913	9
Madhya Pradesh	Guna	2439	89	1	35	1.262	3	1.417	7
Madhya Pradesh	Gwalior	12051	375	6	149	4.643	6	1.237	6
Madhya Pradesh	Hoshangabad	5181	195	4	69	2.594	5	1.329	6
Madhya Pradesh	Indore	25803	845	8	536	17.561	9	2.078	9
Madhya Pradesh	Jabalpur	10808	386	6	172	6.145	7	1.591	7
Madhya Pradesh	Khajuraho	3857	125	2	45	1.479	3	1.179	5
Madhya Pradesh	Khandwa	3796	121	2	86	2.754	5	2.276	9
Madhya Pradesh	Khargone (ST)	4567	151	3	60	2	4	1.321	6
Madhya Pradesh	Mandla (ST)	3132	96	1	21	0.65	1	0.676	3
Madhya Pradesh	Mandsour	4754	163	3	66	2.277	4	1.394	7
Madhya Pradesh	Morena	3752	123	2	31	1.007	2	0.816	3
Madhya Pradesh	Rajgarh	2262	78	1	44	1.519	3	1.947	9
Madhya Pradesh	Ratlam (ST)	3873	135	2	53	1.839	4	1.36	6
Madhya Pradesh	Rewa	2333	85	1	30	1.081	2	1.269	6
Madhya Pradesh	Sagar	3127	118	2	96	3.616	6	3.075	10



COVID-19 Metrics across Parliamentary Constituencies and Districts in India

Madhya Pradesh	Satna	1999	80	1	35	1,408	3	1,769	8
Madhya Pradesh	Shahdol (ST)	4462	158	3	46	1,619	3	1,023	5
Madhya Pradesh	Sidhi	3240	110	1	41	1,402	3	1,28	6
Madhya Pradesh	Tikamgarh (SC)	2043	81	1	41	1,629	3	2,008	9
Madhya Pradesh	Ujjain (SC)	3996	148	3	110	4,066	6	2,753	10
Madhya Pradesh	Vidisha	3654	119	2	73	2,383	5	2,004	9
Maharashtra	Ahmednagar	31485	974	9	485	15,007	9	1,54	7
Maharashtra	Akola	10065	400	6	301	11,958	9	2,988	10
Maharashtra	Amravati (SC)	11688	488	7	242	10,093	8	2,068	9
Maharashtra	Aurangabad	24687	951	9	586	22,569	10	2,373	9
Maharashtra	Baramati	113341	3002	10	2278	60,326	10	2,01	9
Maharashtra	Beed	12926	469	7	385	13,998	9	2,982	10
Maharashtra	Bhandara-Gondiya	14441	593	7	261	10,713	8	1,806	8
Maharashtra	Bhiwandi	92746	1881	10	2264	45,931	10	2,441	9
Maharashtra	Buldhana	8324	318	5	139	5,299	7	1,668	8
Maharashtra	Chandrapur	12866	465	6	243	8,798	7	1,89	9
Maharashtra	Dhule	22741	913	9	441	17,709	9	1,939	9
Maharashtra	Dindori (ST)	38977	1267	9	656	21,315	10	1,682	8
Maharashtra	Gadchiroli-chimur (ST)	10749	437	6	124	5,047	7	1,154	5
Maharashtra	Hatkanangle	27315	1158	9	901	38,195	10	3,298	10
Maharashtra	Hingoli	9663	348	5	237	8,529	7	2,454	9
Maharashtra	Jalgaon	26564	1079	9	670	27,198	10	2,521	10
Maharashtra	Jalna	20518	717	8	505	17,639	9	2,46	10
Maharashtra	Kalyan	62693	1997	10	1534	48,871	10	2,447	9
Maharashtra	Kolhapur	29157	1057	9	975	35,338	10	3,344	10
Maharashtra	Latur (SC)	17466	673	8	497	19,154	9	2,847	10
Maharashtra	Madha	33307	1008	9	1045	31,605	10	3,136	10
Maharashtra	Maval	72770	2483	10	1549	52,868	10	2,129	9
Maharashtra	Mumbai North	41278	2375	10	1668	95,93	10	4,04	10
Maharashtra	Mumbai North-Central	39670	2376	10	1604	96,1	10	4,044	10
Maharashtra	Mumbai North-East	33413	2376	10	1351	96,1	10	4,044	10
Maharashtra	Mumbai North-West	49458	2376	10	2000	96,1	10	4,044	10
Maharashtra	Mumbai South	24863	2376	10	1006	96,1	10	4,044	10
Maharashtra	Mumbai South -Central	36948	2376	10	1494	96,1	10	4,044	10
Maharashtra	Nagpur	25579	1812	10	696	49,313	10	2,722	10
Maharashtra	Nanded	11690	479	7	307	12,594	9	2,627	10
Maharashtra	Nandurbar (ST)	12183	412	6	285	9,623	8	2,338	9
Maharashtra	Nashik	34736	1267	9	585	21,325	10	1,683	8
Maharashtra	Osmanabad	22793	768	8	706	23,794	10	3,099	10
Maharashtra	Palghar (ST)	39320	728	8	903	16,716	9	2,298	9
Maharashtra	Parbhani	10457	337	5	342	11,017	8	3,266	10
Maharashtra	Pune	63229	3005	10	1270	60,375	10	2,009	9
Maharashtra	Raigad	35137	1426	10	894	36,288	10	2,545	10
Maharashtra	Ramtek (SC)	70517	1809	10	1919	49,221	10	2,722	10
Maharashtra	Ratnagiri -Sindhudurg	9975	513	7	328	16,903	9	3,293	10
Maharashtra	Raver	26835	973	9	666	24,164	10	2,483	10
Maharashtra	Sangli	34467	1376	9	1109	44,29	10	3,218	10
Maharashtra	Satara	29546	1304	9	895	39,493	10	3,029	10
Maharashtra	Shirdi (SC)	21569	973	9	332	14,979	9	1,539	7
Maharashtra	Shirur	98588	3003	10	1981	60,336	10	2,009	9
Maharashtra	Solapur (SC)	19331	838	8	627	27,156	10	3,241	10
Maharashtra	Thane	53459	2001	10	1319	49,378	10	2,467	10
Maharashtra	Wardha	10530	440	6	256	10,702	8	2,434	9
Maharashtra	Yavatmal-Washim	9070	346	5	235	8,971	8	2,589	10

COVID-19 Metrics across Parliamentary Constituencies and Districts in India

Manipur	Inner Manipur	7923	569	7	67	4.8	6	0.844	4
Manipur	Outer Manipur (ST)	5129	300	5	42	2.467	5	0.822	4
Meghalaya	Shillong (ST)	7250	342	5	70	3.326	6	0.971	4
Meghalaya	Tura (ST)	1446	116	2	5	0.401	1	0.346	2
Mizoram	Mizoram (ST)	2240	183	3	0	0.004	1	0.002	1
Nagaland	Nagaland	7759	347	5	21	0.956	2	0.275	1
Odisha	Aska	10218	517	7	114	5.786	7	1.118	5
Odisha	Bargarh	13784	586	7	21	0.876	2	0.15	1
Odisha	Berhampur	12546	541	7	123	5.302	7	0.98	4
Odisha	Bhadrak (SC)	8741	365	5	37	1.564	3	0.429	2
Odisha	Bhubaneswar	37398	1647	10	167	7.341	7	0.446	2
Odisha	Bolangir	9984	381	6	37	1.412	3	0.37	2
Odisha	Cuttack	17028	800	8	76	3.571	6	0.447	2
Odisha	Dhenkanal	8494	387	6	18	0.823	2	0.213	1
Odisha	Jagatsinghpur (SC)	12771	577	7	56	2.52	5	0.437	2
Odisha	Jajpur (SC)	10155	489	7	18	0.879	2	0.18	1
Odisha	Kalahandi	9269	371	5	18	0.729	2	0.197	1
Odisha	Kandhamal	11337	554	7	69	3.383	6	0.611	3
Odisha	Kendrapara	11276	523	7	38	1.774	4	0.339	2
Odisha	Keonjhar (ST)	6654	279	5	20	0.825	2	0.295	1
Odisha	Koraput (ST)	12993	574	7	50	2.195	4	0.382	2
Odisha	Mayurbhanj (ST)	8011	357	5	33	1.466	3	0.411	2
Odisha	Nabarangpur (ST)	10934	441	6	31	1.263	3	0.286	1
Odisha	Puri	20672	855	8	116	4.788	6	0.56	2
Odisha	Sundargarh (ST)	9754	409	6	59	2.472	5	0.605	3
Odisha	Balasore	7998	351	5	54	2.37	5	0.675	3
Odisha	Sambalpur	11364	522	7	34	1.559	3	0.299	1
Puducherry	Pondicherry	31846	2229	10	548	38.345	10	1.721	8
Punjab	Amritsar	9566	430	6	359	16.149	9	3.752	10
Punjab	Anandpur Sahib	13749	473	7	350	12.056	9	2.548	10
Punjab	Bathinda	8216	327	5	163	6.505	7	1.987	9
Punjab	Faridkot (SC)	6980	306	5	162	7.116	7	2.323	9
Punjab	Fatehgarh Sahib (SC)	10897	413	6	462	17.515	9	4.24	10
Punjab	Firozpur	7342	284	5	165	6.386	7	2.246	9
Punjab	Gurdaspur	9974	417	6	264	11.046	8	2.65	10
Punjab	Hoshiarpur (SC)	7155	322	5	266	11.977	9	3.717	10
Punjab	Jalandhar (SC)	14438	574	7	455	18.09	9	3.152	10
Punjab	Khadoor Sahib	6769	252	4	263	9.797	8	3.884	10
Punjab	Ludhiana	11511	488	7	480	20.366	10	4.171	10
Punjab	Patiala	16198	603	8	457	17.032	9	2.823	10
Punjab	Sangrur	4160	234	4	142	8.025	7	3.423	10
Rajasthan	Ajmer	10381	313	5	145	4.377	6	1.398	7
Rajasthan	Alwar	4749	322	5	18	1.213	2	0.377	2
Rajasthan	Banswara(ST)	3151	101	1	42	1.328	3	1.321	6
Rajasthan	Barmer	3840	111	2	40	1.148	2	1.033	5
Rajasthan	Bharatpur (SC)	11631	234	4	112	2.261	4	0.964	4
Rajasthan	Bhilwara	5990	191	4	32	1.022	2	0.536	2
Rajasthan	Bikaner (SC)	11453	335	5	132	3.854	6	1.149	5
Rajasthan	Chittorgarh	4215	120	2	50	1.416	3	1.181	5
Rajasthan	Churu	3110	109	1	23	0.792	2	0.726	3
Rajasthan	Dausa (ST)	5907	192	4	54	1.741	4	0.907	4
Rajasthan	Ganganagar (SC)	3003	97	1	24	0.771	2	0.795	3
Rajasthan	Jaipur	11074	379	6	134	4.592	6	1.212	5



# COVID-19 Metrics across Parliamentary Constituencies and Districts in India

Rajasthan	Jaipur Rural	11862	373	6	136	4.286	6	1.149	5
Rajasthan	Jalore	5493	168	3	57	1.737	4	1.031	5
Rajasthan	Jhalawar-baran	4093	135	2	40	1.332	3	0.984	4
Rajasthan	Jhunjhunu	3045	105	1	31	1.056	2	1.004	4
Rajasthan	Jodhpur	17732	576	7	115	3.751	6	0.651	3
Rajasthan	Karauli -dholpur(SC)	4290	146	3	39	1.332	3	0.91	4
Rajasthan	Kota	11094	356	5	117	3.742	6	1.052	5
Rajasthan	Nagaur	3764	124	2	42	1.389	3	1.12	5
Rajasthan	Pali	14187	420	6	116	3.448	6	0.82	4
Rajasthan	Rajsamand	5017	182	3	59	2.148	4	1.182	5
Rajasthan	Sikar	5420	186	4	52	1.778	4	0.953	4
Rajasthan	Tonk - Sawai Madhopur	2771	84	1	44	1.339	3	1.586	7
Rajasthan	Udaipur (ST)	5617	174	3	55	1.707	4	0.98	4
Sikkim	Sikkim	2025	292	5	3	0.497	1	0.17	1
Tamil Nadu	Arakkonam	22060	887	9	300	12.053	9	1.359	6
Tamil Nadu	Arani	13577	614	8	170	7.664	7	1.249	6
Tamil Nadu	Chennai Central	59097	3241	10	1090	59.776	10	1.845	8
Tamil Nadu	Chennai North	33679	2428	10	615	44.338	10	1.826	8
Tamil Nadu	Chennai South	79837	3150	10	1470	58.008	10	1.842	8
Tamil Nadu	Chidambaram (SC)	12645	595	7	142	6.676	7	1.122	5
Tamil Nadu	Coimbatore	20299	740	8	271	9.872	8	1.334	6
Tamil Nadu	Cuddalore	15041	776	8	176	9.066	8	1.168	5
Tamil Nadu	Dharmapuri	7728	384	6	87	4.339	6	1.129	5
Tamil Nadu	Dindigul	8024	388	6	152	7.337	7	1.889	9
Tamil Nadu	Erode	7192	422	6	94	5.536	7	1.312	6
Tamil Nadu	Kallakurichi	13814	604	8	182	7.933	7	1.314	6
Tamil Nadu	Kancheepuram (SC)	44633	1839	10	679	27.967	10	1.521	7
Tamil Nadu	Kanniyakumari	14388	680	8	237	11.207	8	1.649	8
Tamil Nadu	Karur	7500	366	5	105	5.111	7	1.395	7
Tamil Nadu	Krishnagiri	6357	277	5	92	4.024	6	1.454	7
Tamil Nadu	Madurai	8585	526	7	193	11.824	9	2.247	9
Tamil Nadu	Mayiladuthurai	9227	426	6	139	6.432	7	1.511	7
Tamil Nadu	Nagapattinam (SC)	9610	483	7	110	5.529	7	1.145	5
Tamil Nadu	Namakkal	9777	463	6	121	5.73	7	1.238	6
Tamil Nadu	Nilgiris (SC)	15229	694	8	156	7.089	7	1.022	4
Tamil Nadu	Perambalur	7526	358	5	96	4.571	6	1.277	6
Tamil Nadu	Pollachi	17976	736	8	239	9.797	8	1.331	6
Tamil Nadu	Ramanathapuram	10983	490	7	199	8.868	8	1.809	8
Tamil Nadu	Salem	12141	647	8	189	10.082	8	1.559	7
Tamil Nadu	Sivaganga	9076	408	6	173	7.786	7	1.909	9
Tamil Nadu	Sriperumbudur	49366	1838	10	847	31.542	10	1.716	8
Tamil Nadu	Tenkasi (SC)	12061	546	7	213	9.651	8	1.769	8
Tamil Nadu	Thanjavur	10978	535	7	150	7.301	7	1.364	6
Tamil Nadu	Theni	20436	901	9	290	12.772	9	1.417	7
Tamil Nadu	Thoothukkudi	14499	752	8	127	6.572	7	0.874	4
Tamil Nadu	Tiruchirappalli	8388	438	6	117	6.108	7	1.394	7
Tamil Nadu	Tirunelveli	12936	679	8	191	10.018	8	1.476	7
Tamil Nadu	Tiruppur	6651	432	6	88	5.743	7	1.328	6
Tamil Nadu	Tiruvallur (SC)	22505	840	8	363	13.569	9	1.615	8
Tamil Nadu	Tiruvannamalai	11255	578	7	180	9.263	8	1.602	8
Tamil Nadu	Vellore	15198	872	9	265	15.229	9	1.747	8
Tamil Nadu	Viluppuram (SC)	12709	639	8	113	5.701	7	0.892	4
Tamil Nadu	Virudhunagar	13502	604	8	234	10.446	8	1.73	8

COVID-19 Metrics across Parliamentary Constituencies and Districts in India

Telangana	Adilabad(ST)	5349	228	4	2	0.087	1	0.038	1
Telangana	Bhongir	10571	418	6	0	0.011	1	0.003	1
Telangana	Chevella	16405	537	7	4	0.135	1	0.025	1
Telangana	Hyderabad	27499	1448	10	10	0.502	1	0.035	1
Telangana	Karimnagar	17106	794	8	0	0	1	0	1
Telangana	Khammam	10593	512	7	8	0.4	1	0.078	1
Telangana	Mahabubabad(ST)	13375	530	7	21	0.824	2	0.156	1
Telangana	Mahbubnagar	7801	344	5	2	0.071	1	0.021	1
Telangana	Malkajgiri	24564	724	8	4	0.125	1	0.017	1
Telangana	Medak	9299	405	6	0	0.001	1	0	1
Telangana	Nagarkurnool(SC)	9129	391	6	3	0.127	1	0.033	1
Telangana	Nalgonda	10864	481	7	2	0.071	1	0.015	1
Telangana	Nizamabad	8431	371	5	0	0.003	1	0.001	1
Telangana	Peddapalle (SC)	9265	409	6	1	0.043	1	0.01	1
Telangana	Secunderabad	25145	1372	9	8	0.463	1	0.034	1
Telangana	Warangal (SC)	12328	539	7	0	0	1	0	1
Telangana	Zahirabad	8946	355	5	1	0.041	1	0.011	1
Tripura	Tripura East (ST)	12898	590	7	98	4.504	6	0.763	3
Tripura	Tripura West	16732	829	8	232	11.481	8	1.385	7
Uttar Pradesh	Agra (SC)	3364	113	2	63	2.106	4	1.864	8
Uttar Pradesh	Akbarpur	14839	420	6	382	10.816	8	2.572	10
Uttar Pradesh	Aligarh	6218	226	4	30	1.076	2	0.476	2
Uttar Pradesh	Allahabad	10583	304	5	145	4.169	6	1.373	7
Uttar Pradesh	Ambedkar Nagar	2817	94	1	47	1.582	3	1.678	8
Uttar Pradesh	Amethi	2693	96	1	24	0.845	2	0.883	4
Uttar Pradesh	Amroha	4554	182	3	64	2.533	5	1.395	7
Uttar Pradesh	Aonla	4934	169	3	65	2.23	4	1.322	6
Uttar Pradesh	Azamgarh	2535	91	1	38	1.372	3	1.506	7
Uttar Pradesh	Badaun	2764	89	1	38	1.215	3	1.357	6
Uttar Pradesh	Baghpat	6634	238	4	86	3.083	5	1.297	6
Uttar Pradesh	Bahraich (SC)	2728	83	1	49	1.476	3	1.778	8
Uttar Pradesh	Ballia	3730	145	2	51	1.977	4	1.367	6
Uttar Pradesh	Banda	3095	128	2	28	1.17	2	0.913	4
Uttar Pradesh	Bansgaon (SC)	7411	272	4	117	4.287	6	1.575	7
Uttar Pradesh	Barabanki (SC)	5746	209	4	65	2.363	5	1.129	5
Uttar Pradesh	Bareilly	6702	224	4	88	2.955	5	1.317	6
Uttar Pradesh	Basti	4096	135	2	77	2.549	5	1.888	9
Uttar Pradesh	Bhadohi	5590	186	3	69	2.275	4	1.226	6
Uttar Pradesh	Bijnor	5206	162	3	93	2.873	5	1.777	8
Uttar Pradesh	Bulandshahr (SC)	3070	110	2	49	1.764	4	1.606	8
Uttar Pradesh	Chandauli	7170	261	4	116	4.228	6	1.62	8
Uttar Pradesh	Deoria	4039	154	3	49	1.851	4	1.206	5
Uttar Pradesh	Dhaurahra	3332	110	1	39	1.283	3	1.17	5
Uttar Pradesh	Domariyaganj	3563	148	3	42	1.738	4	1.175	5
Uttar Pradesh	Etah	2370	93	1	12	0.454	1	0.489	2
Uttar Pradesh	Etawah (SC)	5569	206	4	82	3.033	5	1.471	7
Uttar Pradesh	Faizabad	6540	205	4	83	2.611	5	1.272	6
Uttar Pradesh	Farrukhabad	4193	156	3	55	2.067	4	1.323	6
Uttar Pradesh	Fatehpur	2882	96	1	51	1.698	3	1.762	8
Uttar Pradesh	Fatehpur Sikri	3892	118	2	79	2.402	5	2.031	9
Uttar Pradesh	Firozabad	2885	135	2	59	2.779	5	2.061	9
Uttar Pradesh	Gautam Buddha Nagar	15902	558	7	92	3.239	5	0.58	3
Uttar Pradesh	Ghaziabad	18706	512	7	128	3.501	6	0.684	3

# COVID-19 Metrics across Parliamentary Constituencies and Districts in India

Uttar Pradesh	Ghazipur	3100	103	1	45	1.5	3	1.457	7
Uttar Pradesh	Ghosi	3677	141	2	46	1.778	4	1.258	6
Uttar Pradesh	Gonda	2805	100	1	33	1.173	2	1.168	5
Uttar Pradesh	Gorakhpur	10334	330	5	171	5.456	7	1.655	8
Uttar Pradesh	Hamirpur	3167	104	1	38	1.248	3	1.203	5
Uttar Pradesh	Hardoi (SC)	3289	110	1	54	1.802	4	1.645	8
Uttar Pradesh	Hathras (SC)	4051	126	2	21	0.661	1	0.524	2
Uttar Pradesh	Jalaun (SC)	5597	191	4	91	3.099	5	1.625	8
Uttar Pradesh	Jaunpur	3107	108	1	45	1.558	3	1.441	7
Uttar Pradesh	Jhansi	8368	278	5	158	5.24	7	1.884	9
Uttar Pradesh	Kairana	5432	202	4	66	2.464	5	1.222	6
Uttar Pradesh	Kaiserganj	2878	98	1	39	1.319	3	1.34	6
Uttar Pradesh	Kannauj	4171	157	3	57	2.132	4	1.359	6
Uttar Pradesh	Kanpur	11042	453	6	288	11.823	9	2.609	10
Uttar Pradesh	Kaushambi (SC)	3146	125	2	39	1.546	3	1.241	6
Uttar Pradesh	Kheri	3965	135	2	42	1.439	3	1.067	5
Uttar Pradesh	Kushi Nagar	3811	129	2	39	1.329	3	1.029	5
Uttar Pradesh	Lalganj (SC)	2691	90	1	41	1.368	3	1.515	7
Uttar Pradesh	Lucknow	26431	1136	9	361	15.543	9	1.368	7
Uttar Pradesh	Machhlishahr (SC)	4460	160	3	73	2.622	5	1.64	8
Uttar Pradesh	Maharajganj	5331	195	4	86	3.134	5	1.606	8
Uttar Pradesh	Mainpuri	4304	163	3	71	2.665	5	1.639	8
Uttar Pradesh	Mathura	4637	160	3	100	3.438	6	2.146	9
Uttar Pradesh	Meerut	7193	285	5	164	6.505	7	2.28	9
Uttar Pradesh	Mirzapur	2719	96	1	29	1.035	2	1.076	5
Uttar Pradesh	Misrikh (SC)	3982	150	3	80	3.018	5	2.01	9
Uttar Pradesh	Mohanlalganj (SC)	33609	960	9	460	13.124	9	1.368	6
Uttar Pradesh	Moradabad	7690	220	4	123	3.515	6	1.599	7
Uttar Pradesh	Muzaffarnagar	5594	196	4	95	3.351	6	1.706	8
Uttar Pradesh	Nagina (SC)	1494	80	1	21	1.146	2	1.429	7
Uttar Pradesh	Phulpur	7944	302	5	109	4.139	6	1.372	7
Uttar Pradesh	Pilibhit	4981	177	3	87	3.083	5	1.747	8
Uttar Pradesh	Pratapgarh	2746	114	2	33	1.378	3	1.209	5
Uttar Pradesh	Rae Bareli	3655	130	2	91	3.232	5	2.493	10
Uttar Pradesh	Rampur	4700	189	4	44	1.776	4	0.938	4
Uttar Pradesh	Robertsganj (SC)	4451	163	3	58	2.116	4	1.301	6
Uttar Pradesh	Saharanpur	5045	193	4	77	2.95	5	1.529	7
Uttar Pradesh	Salempur	4491	175	3	59	2.302	4	1.318	6
Uttar Pradesh	Sambhal	5197	156	3	80	2.386	5	1.531	7
Uttar Pradesh	Sant Kabir Nagar	4936	156	3	76	2.388	5	1.533	7
Uttar Pradesh	Shahjahanpur (SC)	6026	178	3	86	2.545	5	1.433	7
Uttar Pradesh	Shrawasti	2182	84	1	31	1.169	2	1.399	7
Uttar Pradesh	Sitapur	2011	80	1	27	1.083	2	1.358	6
Uttar Pradesh	Sultanpur	3793	145	2	60	2.313	4	1.592	7
Uttar Pradesh	Unnao	4006	113	2	81	2.277	4	2.014	9
Uttar Pradesh	Varanasi	9864	391	6	186	7.363	7	1.882	8
Uttarakhand	Almora (SC)	5402	279	5	27	1.412	3	0.506	2
Uttarakhand	Garhwal	7389	378	6	54	2.778	5	0.734	3
Uttarakhand	Hardwar	16937	571	7	328	11.049	8	1.935	9
Uttarakhand	Nainital-Udhamsingh Nagar	14014	522	7	186	6.94	7	1.33	6
Uttarakhand	Tehri Garhwal	13893	705	8	329	16.674	9	2.367	9
West Bengal	Alipurduars (ST)	7834	312	5	89	3.538	6	1.135	5

# COVID-19 Metrics across Parliamentary Constituencies and Districts in India

West Bengal	Arambag (SC)	6231	245	4	108	4.231	6	1.728	8
West Bengal	Asansol	5949	253	4	62	2.619	5	1.036	5
West Bengal	Baharampur	2521	93	1	28	1.035	2	1.108	5
West Bengal	Balurghat	6775	288	5	49	2.075	4	0.72	3
West Bengal	Bangaon (SC)	9137	414	6	180	8.134	7	1.967	9
West Bengal	Bankura	3676	161	3	35	1.523	3	0.948	4
West Bengal	Barasat	12474	555	7	264	11.767	9	2.12	9
West Bengal	Bardhaman-durgapur	4969	174	3	50	1.768	4	1.016	4
West Bengal	Bardhaman Purba(SC)	2456	122	2	24	1.213	3	0.996	4
West Bengal	Barrackpur	12674	565	7	268	11.949	9	2.116	9
West Bengal	Basirhat	10878	571	7	231	12.099	9	2.12	9
West Bengal	Birbhum	3173	128	2	26	1.032	2	0.806	3
West Bengal	Bishnupur (SC)	4075	159	3	41	1.606	3	1.01	4
West Bengal	Bolpur (SC)	3493	126	2	31	1.112	2	0.886	4
West Bengal	Coochbehar (SC)	5754	230	4	37	1.47	3	0.639	3
West Bengal	Darjeeling	11000	464	6	138	5.806	7	1.253	6
West Bengal	Diamond Harbour	4488	221	4	85	4.172	6	1.885	9
West Bengal	Dum Dum	16205	584	7	348	12.534	9	2.148	9
West Bengal	Ghatal	5122	225	4	75	3.309	6	1.473	7
West Bengal	Hooghly	6864	249	4	121	4.398	6	1.767	8
West Bengal	Howrah	8076	401	6	243	12.09	9	3.012	10
West Bengal	Jadavpur	5167	232	4	100	4.476	6	1.931	9
West Bengal	Jalpaiguri (SC)	7500	295	5	72	2.843	5	0.964	4
West Bengal	Jangipur	2346	93	1	26	1.033	2	1.107	5
West Bengal	Jaynagar (SC)	10732	334	5	216	6.733	7	2.014	9
West Bengal	Jhargram (ST)	4069	146	3	45	1.612	3	1.105	5
West Bengal	Kanathi	5566	229	4	70	2.887	5	1.263	6
West Bengal	Kolkata Dakshin	37252	1079	9	1038	30.057	10	2.787	10
West Bengal	Kolkata Uttar	33773	1397	10	960	39.69	10	2.841	10
West Bengal	Krishnanagar	4041	168	3	47	1.958	4	1.165	5
West Bengal	Maldaha Dakshin	2510	162	3	21	1.382	3	0.853	4
West Bengal	Maldaha Uttar	6344	187	4	51	1.518	3	0.81	3
West Bengal	Mathurapur (SC)	4837	220	4	91	4.145	6	1.88	8
West Bengal	Medinipur	5976	224	4	88	3.298	5	1.47	7
West Bengal	Murshidabad	2805	102	1	31	1.145	2	1.121	5
West Bengal	Purulia	3483	140	2	19	0.784	2	0.558	2
West Bengal	Raiganj	3437	136	2	36	1.42	3	1.047	5
West Bengal	Ranaghat (SC)	3800	169	3	44	1.979	4	1.169	5
West Bengal	Sreerampur	7914	318	5	196	7.894	7	2.479	10
West Bengal	Tamluk	5674	228	4	72	2.895	5	1.267	6
West Bengal	Uluberia	9612	400	6	289	12.029	9	3.006	10

S.Table 2. COVID-19 metrics for Districts

State Name	District Name	Case Count	Cases per 100,000	Decile Cases per 100,000	Death count	Deaths per 100,000	Decile Deaths per 100,000	CFR (%)	Decile CFR
Andaman & Nicobar Islands	Andaman & Nicobar Islands	4108	953	10	56	12.994	10	1.363	7
Andhra Pradesh	Anantapur	62469	1342	10	537	11.533	9	0.86	5
Andhra Pradesh	Chittoor	73655	1548	10	741	15.572	10	1.006	6
Andhra Pradesh	East Godavari	109611	1820	10	584	9.699	9	0.533	4
Andhra Pradesh	Guntur	62348	1097	10	584	10.272	9	0.937	6
Andhra Pradesh	Krishna	34598	684	9	524	10.357	9	1.515	8
Andhra Pradesh	Kurnool	58782	1272	10	480	10.385	9	0.817	5
Andhra Pradesh	Prakasam	56582	1453	10	555	14.254	10	0.981	6
Andhra Pradesh	Sri Potti Sriramulu Nellore	58125	1745	10	478	14.351	10	0.822	5
Andhra Pradesh	Srikakulam	42606	1381	10	336	10.889	9	0.789	5
Andhra Pradesh	Visakhapatnam	53806	1105	10	489	10.047	9	0.909	5
Andhra Pradesh	Vizianagaram	38180	1447	10	226	8.566	9	0.592	4
Andhra Pradesh	West Godavari	78603	1712	10	479	10.435	9	0.609	4
Andhra Pradesh	Y.s.r.	49863	1516	10	412	12.527	9	0.826	5
Arunachal Pradesh	Anjaw	162	428	7	0	0	1	0	1
Arunachal Pradesh	Changlang	1085	639	9	3	1.766	5	0.276	3
Arunachal Pradesh	East Kameng	298	535	8	0	0	1	0	1
Arunachal Pradesh	East Siang	779	856	9	4	4.393	7	0.513	4
Arunachal Pradesh	Kamle	25	122	3	0	0	1	0	1
Arunachal Pradesh	Kra Daadi	32	91	2	0	0	1	0	1
Arunachal Pradesh	Kurung Kumey	105	131	3	0	0	1	0	1
Arunachal Pradesh	Lepa Rada	170	857	9	0	0	1	0	1
Arunachal Pradesh	Lohit	384	565	8	0	0	1	0	1
Arunachal Pradesh	Longding	211	377	6	0	0	1	0	1
Arunachal Pradesh	Lower Dibang Valley	309	509	8	0	0	1	0	1
Arunachal Pradesh	Lower Siang	269	665	9	0	0	1	0	1
Arunachal Pradesh	Lower Subansiri	295	517	8	1	1.754	5	0.339	3
Arunachal Pradesh	Namsai	329	388	7	2	2.357	6	0.608	4
Arunachal Pradesh	Pakke Kessang	97	213	5	0	0	1	0	1
Arunachal Pradesh	Papum Pare	5828	2734	10	15	7.037	8	0.257	2
Arunachal Pradesh	Shi-Yomi	28	112	2	0	0	1	0	1
Arunachal Pradesh	Siang	71	178	4	0	0	1	0	1
Arunachal Pradesh	Tawang	331	586	8	1	1.769	5	0.302	3
Arunachal Pradesh	Tirap	483	742	9	0	0	1	0	1
Arunachal Pradesh	Dibang Valley	20	145	3	0	0	1	0	1
Arunachal Pradesh	Upper Siang	211	551	8	0	0	1	0	1
Arunachal Pradesh	Upper Subansiri	366	392	7	0	0	1	0	1
Arunachal Pradesh	West Kameng	657	750	9	3	3.424	7	0.457	3
Arunachal Pradesh	West Siang	861	2289	10	1	2.658	6	0.116	2
Assam	Baksa	687	48	1	6	0.418	2	0.873	5
Assam	Barpeta	1121	74	1	8	0.525	2	0.714	4
Assam	Biswanath	467	67	1	1	0.143	2	0.214	2
Assam	Bongaigaon	1303	179	4	5	0.687	3	0.384	3
Assam	Cachar	6216	312	6	35	1.755	5	0.563	4
Assam	Charaideo	113	25	1	10	2.176	6	8.85	10
Assam	Chirang	280	34	1	7	0.855	3	2.5	10

COVID-19 Metrics across Parliamentary Constituencies and Districts in India

Assam	Darrang	1967	195	4	18	1.786	5	0.915	5
Assam	Dhemaji	765	95	2	8	0.994	4	1.046	6
Assam	Dhubri	1723	122	3	11	0.782	3	0.638	4
Assam	Dibrugarh	9486	620	8	88	5.754	8	0.928	5
Assam	Dima Hasao	237	97	2	1	0.409	2	0.422	3
Assam	Goalpara	658	55	1	6	0.504	2	0.912	5
Assam	Golaghat	3803	312	6	31	2.545	6	0.815	5
Assam	Hailakandi	1632	218	5	7	0.935	4	0.429	3
Assam	Hojai	1646	160	4	12	1.166	4	0.729	4
Assam	Jorhat	8771	885	9	44	4.44	7	0.502	3
Assam	Kamrup	4590	245	5	27	1.444	5	0.588	4
Assam	Kamrup Metropolitan	45897	3908	10	115	9.793	9	0.251	2
Assam	Karbi Anglong	632	83	2	10	1.321	4	1.582	8
Assam	Karimganj	1200	87	2	26	1.883	5	2.167	9
Assam	Kokrajhar	408	36	1	11	0.971	4	2.696	10
Assam	Lakhimpur	3006	256	5	20	1.702	5	0.665	4
Assam	Majuli	165	66	1	5	1.993	5	3.03	10
Assam	Marigaon	638	58	1	7	0.636	3	1.097	6
Assam	Nagaon	4515	207	4	18	0.825	3	0.399	3
Assam	Nalbari	948	89	2	14	1.314	4	1.477	8
Assam	Sivasagar	529	62	1	28	3.302	7	5.293	10
Assam	Sonitpur	2548	173	4	11	0.749	3	0.432	3
Assam	South Salmara- Mankachar	51	10	1	1	0.198	2	1.961	9
Assam	Tinsukia	3366	224	5	28	1.864	5	0.832	5
Assam	Udalguri	758	74	1	6	0.589	3	0.792	5
Assam	West Karbi Anglong	39	11	1	1	0.281	2	2.564	10
Bihar	Araria	6108	193	4	17	0.536	2	0.278	3
Bihar	Arwal	1982	243	5	8	0.981	4	0.404	3
Bihar	Aurangabad	4098	142	3	11	0.381	2	0.268	2
Bihar	Banka	2904	124	3	12	0.512	2	0.413	3
Bihar	Begusarai	6679	198	4	27	0.798	3	0.404	3
Bihar	Bhagalpur	8087	236	5	65	1.895	5	0.804	5
Bihar	Bhojpur	4413	143	3	34	1.102	4	0.77	5
Bihar	Buxar	3614	183	4	13	0.66	3	0.36	3
Bihar	Darbhanga	3411	76	1	25	0.555	3	0.733	5
Bihar	East Champaran	7348	127	3	38	0.655	3	0.517	4
Bihar	Gaya	6261	125	3	46	0.918	4	0.735	5
Bihar	Gopalganj	4757	163	4	3	0.103	2	0.063	2
Bihar	Jamui	2689	136	3	6	0.304	2	0.223	2
Bihar	Jehanabad	3406	267	5	11	0.861	3	0.323	3
Bihar	Kaimur (bhabua)	1752	93	2	9	0.479	2	0.514	4
Bihar	Katihar	6292	179	4	11	0.313	2	0.175	2
Bihar	Khagaria	2822	151	3	11	0.588	3	0.39	3
Bihar	Kishanganj	3473	180	4	10	0.518	2	0.288	3
Bihar	Lakhisarai	3095	292	6	8	0.755	3	0.258	2
Bihar	Madhepura	3994	175	4	10	0.438	2	0.25	2
Bihar	Madhubani	6661	131	3	21	0.414	2	0.315	3
Bihar	Munger	3364	208	4	39	2.413	6	1.159	6
Bihar	Muzaffarpur	9177	168	4	34	0.621	3	0.37	3
Bihar	Nalanda	6590	201	4	45	1.374	4	0.683	4
Bihar	Nawada	3152	125	3	17	0.676	3	0.539	4
Bihar	Patna	32610	493	8	245	3.706	7	0.751	5
Bihar	Purnia	7588	203	4	9	0.241	2	0.119	2
Bihar	Rohtas	6020	178	4	36	1.067	4	0.598	4

COVID-19 Metrics across Parliamentary Constituencies and Districts in India

Bihar	Saharsa	5459	250	5	8	0.367	2	0.147	2
Bihar	Samastipur	4482	93	2	30	0.626	3	0.669	4
Bihar	Saran (chhapra)	5895	132	3	34	0.76	3	0.577	4
Bihar	Sheikhpura	2634	330	6	7	0.878	3	0.266	2
Bihar	Sheohar	1182	216	5	1	0.183	2	0.085	2
Bihar	Sitamarhi	3594	88	2	11	0.27	2	0.306	3
Bihar	Siwan	3998	106	2	20	0.528	2	0.5	3
Bihar	Supaul	4703	185	4	11	0.432	2	0.234	2
Bihar	Vaishali	4638	116	2	36	0.899	3	0.776	5
Bihar	West Champaran	5280	118	2	17	0.379	2	0.322	3
Chandigarh	Chandigarh	13646	1168	10	208	17.81	10	1.524	8
Chhattisgarh	Balod	3659	390	7	10	1.067	4	0.273	3
Chhattisgarh	Balodabazar	4435	298	6	72	4.846	8	1.623	8
Chhattisgarh	Balrampur	1807	213	5	4	0.472	2	0.221	2
Chhattisgarh	Bemetara	1989	214	5	21	2.263	6	1.056	6
Chhattisgarh	Bastar	5441	566	8	22	2.287	6	0.404	3
Chhattisgarh	Bijapur	2953	858	9	6	1.744	5	0.203	2
Chhattisgarh	Bilaspur	9958	551	8	87	4.816	8	0.874	5
Chhattisgarh	Dantewada (South Bastar)	3730	1465	10	9	3.534	7	0.241	2
Chhattisgarh	Dhamtari	3777	415	7	48	5.269	8	1.271	7
Chhattisgarh	Durg	14535	738	9	201	10.209	9	1.383	7
Chhattisgarh	Gariyaband	2106	243	5	17	1.959	5	0.807	5
Chhattisgarh	Janjgir-champa	8701	472	7	75	4.069	7	0.862	5
Chhattisgarh	Jashpur	1561	161	4	7	0.72	3	0.448	3
Chhattisgarh	Kabirdham	3152	333	6	21	2.216	6	0.666	4
Chhattisgarh	Kondagaon	2501	408	7	12	1.957	5	0.48	3
Chhattisgarh	Korba	6528	474	7	9	0.653	3	0.138	2
Chhattisgarh	Koriya	2397	318	6	12	1.592	5	0.501	3
Chhattisgarh	Mahasamund	3621	308	6	38	3.236	7	1.049	6
Chhattisgarh	Mungeli	2255	311	6	6	0.827	3	0.266	2
Chhattisgarh	Narayanpur	1668	800	9	1	0.479	2	0.06	2
Chhattisgarh	Raigarh	10642	624	8	116	6.799	8	1.09	6
Chhattisgarh	Raipur	39089	1720	10	518	22.793	10	1.325	7
Chhattisgarh	Rajnandgaon	10463	590	8	57	3.214	7	0.545	4
Chhattisgarh	Sukma	2696	845	9	5	1.567	5	0.185	2
Chhattisgarh	Surajpur	2655	289	6	15	1.635	5	0.565	4
Chhattisgarh	Surguja	3827	410	7	30	3.213	7	0.784	5
Chhattisgarh	Kanker (North Bastar)	3553	416	7	27	3.16	7	0.76	5
Chhattisgarh	Gaurela- Pendra-Marwahi	491	97	2	1	0.197	2	0.204	2
NCT of Delhi	NCT of Delhi	331017	1716	10	6009	31.157	10	1.815	9
Dadra & Nagar Haveli	Dadra & Nagar Haveli	1550	543	8	1	0.35	2	0.065	2
Daman & Diu	Daman	1321	562	8	1	0.426	2	0.076	2
Daman & Diu	Diu	310	533	8	0	0	1	0	1
Goa	Goa	40587	2459	10	544	32.957	10	1.34	7
Gujarat	Ahmadabad	40210	514	8	1873	23.939	10	4.658	10
Gujarat	Amreli	2585	148	3	25	1.433	5	0.967	6
Gujarat	Anand	1297	55	1	16	0.672	3	1.234	7
Gujarat	Aravalli	679	58	1	24	2.045	5	3.535	10
Gujarat	Banaskantha	2489	70	1	27	0.761	3	1.085	6
Gujarat	Bharuch	2670	151	3	15	0.847	3	0.562	4
Gujarat	Bhavnagar	4582	168	4	67	2.458	6	1.462	8
Gujarat	Botad	810	83	1	5	0.515	2	0.617	4



COVID-19 Metrics across Parliamentary Constituencies and Districts in India

Gujarat	Chhota Udepur	585	51	1	2	0.173	2	0.342	3
Gujarat	Dahod	1810	106	2	6	0.353	2	0.331	3
Gujarat	Dangs	116	42	1	0	0	1	0	1
Gujarat	Devbhoomi Dwarka	695	85	2	5	0.609	3	0.719	4
Gujarat	Gandhinagar	4431	240	5	87	4.721	8	1.963	9
Gujarat	Gir Somnath	1656	130	3	22	1.722	5	1.329	7
Gujarat	Jamnagar	7692	481	7	35	2.19	6	0.455	3
Gujarat	Junagadh	3403	183	4	33	1.771	5	0.97	6
Gujarat	Kheda	1460	61	1	15	0.628	3	1.027	6
Gujarat	Kachchh	2534	107	2	33	1.39	4	1.302	7
Gujarat	Mahisagar	1170	88	2	6	0.452	2	0.513	4
Gujarat	Mehsana	3448	153	3	31	1.371	4	0.899	5
Gujarat	Morbi	1985	157	3	16	1.263	4	0.806	5
Gujarat	Narmada	1129	145	3	1	0.128	2	0.089	2
Gujarat	Navsari	1301	85	2	7	0.455	2	0.538	4
Gujarat	Panchmahal	2689	113	2	20	0.841	3	0.744	5
Gujarat	Patan	2271	164	4	44	3.182	7	1.937	9
Gujarat	Porbandar	531	81	1	4	0.609	3	0.753	5
Gujarat	Rajkot	11553	353	6	155	4.729	8	1.342	7
Gujarat	Sabarkantha	1418	89	2	11	0.688	3	0.776	5
Gujarat	Surat	33928	544	8	819	13.134	10	2.414	10
Gujarat	Surendranagar	2133	120	2	12	0.673	3	0.563	4
Gujarat	Tapi	751	47	1	6	0.379	2	0.799	5
Gujarat	Vadodara	14325	406	7	204	5.78	8	1.424	7
Gujarat	Valsad	1228	68	1	9	0.501	2	0.733	5
Himachal Pradesh	Bilaspur	1127	261	5	5	1.158	4	0.444	3
Himachal Pradesh	Chamba	1034	180	4	12	2.085	6	1.161	6
Himachal Pradesh	Hamirpur	1094	213	5	11	2.138	6	1.005	6
Himachal Pradesh	Kangra	2786	164	4	57	3.365	7	2.046	9
Himachal Pradesh	Kinnaur	237	247	5	4	4.176	7	1.688	8
Himachal Pradesh	Kullu	1018	201	4	19	3.758	7	1.866	9
Himachal Pradesh	Lahaul & Spiti	286	785	9	1	2.743	6	0.35	3
Himachal Pradesh	Mandi	2405	216	5	32	2.869	6	1.331	7
Himachal Pradesh	Shimla	1966	220	5	56	6.26	8	2.848	10
Himachal Pradesh	Sirmaur	2100	334	6	16	2.548	6	0.762	5
Himachal Pradesh	Solan	3441	536	8	35	5.455	8	1.017	6
Himachal Pradesh	Una	1473	239	5	15	2.436	6	1.018	6
Haryana	Ambala	8701	723	9	105	8.724	9	1.207	7
Haryana	Bhiwani	3290	252	5	46	3.526	7	1.398	7
Haryana	Charkhi Dadri	808	145	3	4	0.715	3	0.495	3
Haryana	Faridabad	22686	1047	10	238	10.984	9	1.049	6
Haryana	Fatehabad	2711	247	5	49	4.459	7	1.807	9
Haryana	Gurgaon	25403	1206	10	190	9.017	9	0.748	5
Haryana	Hissar	8199	410	7	100	5.001	8	1.22	7
Haryana	Jhajjar	3034	277	5	32	2.919	6	1.055	6
Haryana	Jind	2511	167	4	46	3.062	7	1.832	9
Haryana	Kaithal	2805	230	5	41	3.367	7	1.462	8
Haryana	Karnal	8021	452	7	115	6.485	8	1.434	7
Haryana	Kurukshetra	6338	646	9	97	9.883	9	1.53	8
Haryana	Mahendragarh	4160	394	7	7	0.663	3	0.168	2
Haryana	Nuh	1208	138	3	25	2.866	6	2.07	9
Haryana	Palwal	3041	300	6	19	1.873	5	0.625	4
Haryana	Panchkula	6837	1132	10	106	17.547	10	1.55	8
Haryana	Panipat	7777	564	8	98	7.111	8	1.26	7



COVID-19 Metrics across Parliamentary Constituencies and Districts in India

Haryana	Rewari	6734	573	8	34	2.893	6	0.505	4
Haryana	Rohtak	6981	566	8	72	5.842	8	1.031	6
Haryana	Sirsa	4642	315	6	73	4.949	8	1.573	8
Haryana	Sonipat	9307	540	8	48	2.784	6	0.516	4
Haryana	Yamunanagar	4839	296	6	95	5.817	8	1.963	9
Jharkhand	Bokaro	4800	208	4	41	1.774	5	0.854	5
Jharkhand	Chatra	1286	108	2	10	0.843	3	0.778	5
Jharkhand	Deoghar	2818	166	4	17	1.004	4	0.603	4
Jharkhand	Dhanbad	5801	187	4	78	2.512	6	1.345	7
Jharkhand	Dumka	1186	79	1	9	0.596	3	0.759	5
Jharkhand	East Singhbhum	15693	430	7	323	8.849	9	2.058	9
Jharkhand	Garhwa	2370	156	3	10	0.658	3	0.422	3
Jharkhand	Giridih	3260	117	2	13	0.465	2	0.399	3
Jharkhand	Godda	1851	125	3	8	0.542	3	0.432	3
Jharkhand	Gumla	1920	163	4	2	0.17	2	0.104	2
Jharkhand	Hazaribagh	3894	382	6	26	2.55	6	0.668	4
Jharkhand	Jamtara	932	63	1	2	0.134	2	0.215	2
Jharkhand	Khunti	1825	267	5	4	0.585	3	0.219	2
Jharkhand	Koderma	3220	301	6	26	2.434	6	0.807	5
Jharkhand	Latehar	1652	198	4	5	0.6	3	0.303	3
Jharkhand	Lohardaga	1454	273	5	8	1.502	5	0.55	4
Jharkhand	Pakur	829	79	1	2	0.191	2	0.241	2
Jharkhand	Palamu	2911	133	3	14	0.639	3	0.481	3
Jharkhand	Ramgarh	3836	526	8	23	3.154	7	0.6	4
Jharkhand	Ranchi	24146	913	9	160	6.048	8	0.663	4
Jharkhand	Sahibganj	1427	108	2	9	0.682	3	0.631	4
Jharkhand	Saraikela Kharsawan	3310	261	5	9	0.71	3	0.272	2
Jharkhand	Simdega	1811	265	5	4	0.585	3	0.221	2
Jharkhand	West Singhbhum	4120	240	5	36	2.1	6	0.874	5
Jammu & Kashmir	Anantnag	3973	269	5	70	4.732	8	1.762	9
Jammu & Kashmir	Bandipore	3846	1070	10	42	11.689	9	1.092	6
Jammu & Kashmir	Baramula	5215	544	8	135	14.089	10	2.589	10
Jammu & Kashmir	Badgam	5647	1083	10	90	17.253	10	1.594	8
Jammu & Kashmir	Doda	2502	638	9	42	10.709	9	1.679	8
Jammu & Kashmir	Ganderbal	3315	227	5	30	2.057	6	0.905	5
Jammu & Kashmir	Jammu	16106	1042	10	237	15.33	10	1.472	8
Jammu & Kashmir	Kathua	2328	297	6	30	3.832	7	1.289	7
Jammu & Kashmir	Kishtwar	1720	296	6	14	2.41	6	0.814	5
Jammu & Kashmir	Kulgam	2395	503	8	43	9.034	9	1.795	9
Jammu & Kashmir	Kupwara	4076	484	7	71	8.429	9	1.742	9
Jammu & Kashmir	Pulwama	4414	622	8	76	10.713	9	1.722	8
Jammu & Kashmir	Poonch	2139	600	8	22	6.169	8	1.029	6
Jammu & Kashmir	Rajouri	3120	492	7	45	7.102	8	1.442	8
Jammu & Kashmir	Ramban	1510	579	8	11	4.217	7	0.728	4
Jammu & Kashmir	Reasi	1193	264	5	7	1.55	5	0.587	4
Jammu & Kashmir	Samba	2067	468	7	24	5.431	8	1.161	6
Jammu & Kashmir	Shopian	2118	599	8	33	9.327	9	1.558	8
Jammu & Kashmir	Srinagar	17697	2449	10	332	45.941	10	1.876	9
Jammu & Kashmir	Udhampur	2561	442	7	25	4.31	7	0.976	6
Karnataka	Bagalkot	12523	579	8	126	5.826	8	1.006	6
Karnataka	Bellary	35702	1231	10	509	17.544	10	1.426	7
Karnataka	Belgaum	23935	436	7	326	5.943	8	1.362	7
Karnataka	Bangalore Rural	14114	1318	10	111	10.366	9	0.786	5

COVID-19 Metrics across Parliamentary Constituencies and Districts in India

Karnataka	Bangalore	307540	2820	10	3525	32.32	10	1.146	6
Karnataka	Bidar	6795	348	6	163	8.358	9	2.399	10
Karnataka	Chamrajnagar	5539	470	7	99	8.395	9	1.787	9
Karnataka	Chikkaballapura	9877	677	9	102	6.994	8	1.033	6
Karnataka	Chikmagalur	11519	880	9	134	10.239	9	1.163	6
Karnataka	Chitradurga	11259	590	8	51	2.675	6	0.453	3
Karnataka	Dakshina Kannada	28314	1190	10	631	26.517	10	2.229	9
Karnataka	Davanagere	19264	1013	10	251	13.194	10	1.303	7
Karnataka	Dharwad	19790	937	9	539	25.51	10	2.724	10
Karnataka	Gadag	10222	835	9	140	11.442	9	1.37	7
Karnataka	Hassan	23276	1143	10	356	17.478	10	1.529	8
Karnataka	Haveri	9765	534	8	178	9.741	9	1.823	9
Karnataka	Gulbarga	19006	640	9	299	10.067	9	1.573	8
Karnataka	Kodagu	4420	689	9	57	8.881	9	1.29	7
Karnataka	Kolar	7713	455	7	135	7.956	9	1.75	9
Karnataka	Koppal	12823	805	9	265	16.633	10	2.067	9
Karnataka	Mandya	15136	737	9	134	6.521	8	0.885	5
Karnataka	Mysore	45042	1306	10	923	26.765	10	2.049	9
Karnataka	Raichur	12877	586	8	145	6.602	8	1.126	6
Karnataka	Ramanagara	6560	476	7	62	4.5	8	0.945	6
Karnataka	Shimoga	19636	838	9	332	14.174	10	1.691	8
Karnataka	Tumkur	18748	609	8	314	10.196	9	1.675	8
Karnataka	Udupi	20808	1579	10	173	13.127	10	0.831	5
Karnataka	Uttara Kannada	11957	743	9	150	9.317	9	1.254	7
Karnataka	Bijapur	11637	466	7	185	7.408	8	1.59	8
Karnataka	Yadgir	9753	743	9	60	4.569	8	0.615	4
Kerala	Alappuzha	24374	990	10	72	2.925	6	0.295	3
Kerala	Ernakulam	34513	916	9	108	2.868	6	0.313	3
Kerala	Idukki	5899	474	7	7	0.562	3	0.119	2
Kerala	Kannur	19919	693	9	81	2.817	6	0.407	3
Kerala	Kasaragod	16624	1136	10	65	4.443	7	0.391	3
Kerala	Kollam	26080	861	9	86	2.839	6	0.33	3
Kerala	Kottayam	18329	804	9	34	1.492	5	0.185	2
Kerala	Kozhikode	37310	1058	10	111	3.147	7	0.298	3
Kerala	Malappuram	41665	889	9	120	2.559	6	0.288	3
Kerala	Palakkad	21016	660	9	46	1.444	5	0.219	2
Kerala	Pathanamthitta	12502	956	10	7	0.535	2	0.056	2
Kerala	Thiruvananthapuram	49851	1302	10	346	9.037	9	0.694	4
Kerala	Thrissur	28002	777	9	74	2.054	6	0.264	2
Kerala	Wayanad	5776	622	8	5	0.539	3	0.087	2
Ladakh	Kargil	1795	983	10	38	20.82	10	2.117	9
Ladakh	Leh (ladakh)	3803	1840	10	28	13.549	10	0.736	5
Lakshadweep	Lakshadweep	0	0	1	0	0	1	NA	NA
Maharashtra	Ahmednagar	52836	970	10	811	14.89	10	1.535	8
Maharashtra	Akola	8216	401	7	262	12.795	10	3.189	10
Maharashtra	Amravati	16167	489	7	334	10.096	9	2.066	9
Maharashtra	Aurangabad	40158	950	10	954	22.578	10	2.376	10
Maharashtra	Beed	12719	466	7	381	13.947	10	2.996	10
Maharashtra	Bhandara	7835	686	9	177	15.489	10	2.259	10
Maharashtra	Buldana	9509	317	6	158	5.266	8	1.662	8
Maharashtra	Chandrapur	13854	554	8	214	8.555	9	1.545	8
Maharashtra	Dhule	13862	592	8	338	14.423	10	2.438	10
Maharashtra	Gadchiroli	4076	334	6	27	2.211	6	0.662	4

COVID-19 Metrics across Parliamentary Constituencies and Districts in India

Maharashtra	Gondia	8764	505	8	109	6.287	8	1.244	7
Maharashtra	Hingoli	3484	258	5	71	5.264	8	2.038	9
Maharashtra	Jalgaon	52215	1079	10	1317	27.222	10	2.522	10
Maharashtra	Jalna	9155	410	7	249	11.139	9	2.72	10
Maharashtra	Kolhapur	46386	1059	10	1552	35.424	10	3.346	10
Maharashtra	Latur	19849	707	9	570	20.292	10	2.872	10
	Mumbai & Mumbai								
Maharashtra	Suburban	241935	2376	10	9785	96.1	10	4.044	10
Maharashtra	Nagpur	96336	1812	10	2622	49.313	10	2.722	10
Maharashtra	Nanded	18369	480	7	483	12.616	9	2.629	10
Maharashtra	Nandurbar	6060	320	6	136	7.183	8	2.244	9
Maharashtra	Nashik	88886	1268	10	1495	21.33	10	1.682	8
Maharashtra	Osmanabad	14600	768	9	456	23.979	10	3.123	10
Maharashtra	Palghar	41280	709	9	947	16.262	10	2.294	10
Maharashtra	Parbhani	6342	302	6	230	10.946	9	3.627	10
Maharashtra	Pune	323642	3005	10	6502	60.375	10	2.009	9
Maharashtra	Raigad	57401	1859	10	1355	43.892	10	2.361	10
Maharashtra	Ratnagiri	9610	533	8	372	20.64	10	3.871	10
Maharashtra	Sangli	44646	1378	10	1437	44.349	10	3.219	10
Maharashtra	Satara	44655	1302	10	1354	39.469	10	3.032	10
Maharashtra	Sindhudurg	4694	491	7	124	12.968	10	2.642	10
Maharashtra	Solapur	41438	839	9	1344	27.199	10	3.243	10
Maharashtra	Thane	212765	1997	10	5206	48.875	10	2.447	10
Maharashtra	Wardha	6027	407	7	163	10.995	9	2.704	10
Maharashtra	Washim	5421	396	7	115	8.401	9	2.121	9
Maharashtra	Yavatmal	10206	321	6	295	9.267	9	2.89	10
Meghalaya	East Garo Hills	173	128	3	1	0.738	3	0.578	4
Meghalaya	East Jaintia Hills	398	250	5	0	0	1	0	1
Meghalaya	East Khasi Hills	5564	602	8	68	7.36	8	1.222	7
Meghalaya	North Garo Hills	81	48	1	0	0	1	0	1
Meghalaya	Ri Bhoi	780	254	5	1	0.326	2	0.128	2
Meghalaya	South Garo Hills	82	48	1	0	0	1	0	1
Meghalaya	South West Garo Hills	92	18	1	2	0.387	2	2.174	9
Meghalaya	South West Khasi Hills	46	34	1	0	0	1	0	1
Meghalaya	West Garo Hills	1031	403	7	2	0.782	3	0.194	2
Meghalaya	West Jaintia Hills	142	49	1	0	0	1	0	1
Meghalaya	West Khasi Hills	119	39	1	1	0.329	2	0.84	5
Manipur	Bishnupur	527	196	4	3	1.114	4	0.569	4
Manipur	Chandel	213	235	5	5	5.519	8	2.347	10
Manipur	Churachandpur	854	375	6	11	4.824	8	1.288	7
Manipur	Imphal East	2733	615	8	27	6.08	8	0.988	6
Manipur	Imphal West	4264	703	9	30	4.945	8	0.704	4
Manipur	Jiribam	192	318	6	0	0	1	0	1
Manipur	Kakching	403	163	4	2	0.807	3	0.496	3
Manipur	Kamjong	188	244	5	0	0	1	0	1
Manipur	Kangpokpi	465	206	4	6	2.662	6	1.29	7
Manipur	Noney	263	521	8	0	0	1	0	1
Manipur	Pherzawal	33	49	1	0	0	1	0	1
Manipur	Senapati	361	201	4	0	0	1	0	1
Manipur	Tamenglong	558	441	7	3	2.37	6	0.538	4
Manipur	Tengnoupal	164	235	5	0	0	1	0	1
Manipur	Thoubal	1428	633	9	22	9.758	9	1.541	8
Manipur	Ukhrul	399	303	6	0	0	1	0	1

# COVID-19 Metrics across Parliamentary Constituencies and Districts in India

Madhya Pradesh	Agar Malwa	444	61	1	9	1.242	4	2.027	9
Madhya Pradesh	Alirajpur	1044	120	3	13	1.499	5	1.245	7
Madhya Pradesh	Anuppur	1462	148	3	12	1.216	4	0.821	5
Madhya Pradesh	Ashoknagar	551	57	1	14	1.454	5	2.541	10
Madhya Pradesh	Balaghat	1817	94	2	10	0.517	2	0.55	4
Madhya Pradesh	Barwani	2051	129	3	21	1.321	4	1.024	6
Madhya Pradesh	Betul	2294	127	3	54	2.994	7	2.354	10
Madhya Pradesh	Bhind	1086	56	1	7	0.36	2	0.645	4
Madhya Pradesh	Bhopal	22370	828	9	448	16.573	10	2.003	9
Madhya Pradesh	Burhanpur	775	90	2	25	2.888	6	3.226	10
Madhya Pradesh	Chhatarpur	1454	73	1	29	1.457	5	1.994	9
Madhya Pradesh	Chhindwara	2156	90	2	34	1.422	4	1.577	8
Madhya Pradesh	Damoh	1987	137	3	50	3.437	7	2.516	10
Madhya Pradesh	Datia	1333	191	4	19	2.72	6	1.425	7
Madhya Pradesh	Dewas	1800	101	2	23	1.287	4	1.278	7
Madhya Pradesh	Dhar	2635	105	2	41	1.64	5	1.556	8
Madhya Pradesh	Dindori	639	86	2	0	0	1	0	1
Madhya Pradesh	Guna	862	61	1	15	1.055	4	1.74	9
Madhya Pradesh	Gwalior	11847	468	7	151	5.969	8	1.275	7
Madhya Pradesh	Harda	1254	193	4	20	3.073	7	1.595	8
Madhya Pradesh	Hoshangabad	2715	192	4	44	3.119	7	1.621	8
Madhya Pradesh	Indore	31623	847	9	657	17.602	10	2.078	9
Madhya Pradesh	Jabalpur	12130	387	7	193	6.156	8	1.591	8
Madhya Pradesh	Jhabua	1645	145	3	14	1.23	4	0.851	5
Madhya Pradesh	Katni	1702	148	3	15	1.306	4	0.881	5
Madhya Pradesh	Khandwa	1717	114	2	47	3.133	7	2.737	10
Madhya Pradesh	Khargone	3741	175	4	58	2.706	6	1.55	8
Madhya Pradesh	Mandla	949	76	1	9	0.72	3	0.948	6
Madhya Pradesh	Mandsaur	1940	126	3	21	1.36	4	1.082	6
Madhya Pradesh	Morena	2716	121	3	23	1.027	4	0.847	5
Madhya Pradesh	Narsinghapur	2939	236	5	25	2.008	5	0.851	5
Madhya Pradesh	Neemuch	2295	242	5	34	3.59	7	1.481	8
Madhya Pradesh	Niwari	390	79	1	1	0.203	2	0.256	2
Madhya Pradesh	Panna	788	68	1	3	0.258	2	0.381	3
Madhya Pradesh	Raisen	1645	108	2	30	1.967	5	1.824	9
Madhya Pradesh	Rajgarh	1545	87	2	31	1.748	5	2.006	9
Madhya Pradesh	Ratlam	2310	139	3	50	3.001	7	2.165	9
Madhya Pradesh	Rewa	2293	85	2	29	1.074	4	1.265	7
Madhya Pradesh	Sagar	3102	114	2	117	4.315	7	3.772	10
Madhya Pradesh	Satna	2023	79	1	36	1.411	4	1.78	9
Madhya Pradesh	Sehore	2014	134	3	48	3.185	7	2.383	10
Madhya Pradesh	Seoni	1185	75	1	8	0.504	2	0.675	4
Madhya Pradesh	Shahdol	2508	264	5	26	2.741	6	1.037	6
Madhya Pradesh	Shajapur	1167	116	2	18	1.795	5	1.542	8
Madhya Pradesh	Sheopur	988	125	3	7	0.889	3	0.709	4
Madhya Pradesh	Shivpuri	2672	135	3	24	1.212	4	0.898	5
Madhya Pradesh	Sidhi	1187	112	2	9	0.848	3	0.758	5
Madhya Pradesh	Singrauli	1227	77	1	24	1.504	5	1.956	9
Madhya Pradesh	Tikamgarh	949	84	2	26	2.297	6	2.74	10
Madhya Pradesh	Ujjain	3376	148	3	97	4.257	7	2.873	10
Madhya Pradesh	Umaria	845	96	2	12	1.361	4	1.42	7
Madhya Pradesh	Vidisha	2001	120	3	42	2.517	6	2.099	9
Mizoram	Aizawl	1456	319	6	0	0	1	0	1
Mizoram	Champhai	25	24	1	0	0	1	0	1

COVID-19 Metrics across Parliamentary Constituencies and Districts in India

Mizoram	Hnahthial	6	17	1	0	0	1	0	1
Mizoram	Khawzawl	4	11	1	0	0	1	0	1
Mizoram	Kolasib	244	225	5	0	0	1	0	1
Mizoram	Lawangtlai	84	57	1	0	0	1	0	1
Mizoram	Lunglei	269	195	4	0	0	1	0	1
Mizoram	Mamit	54	55	1	0	0	1	0	1
Mizoram	Saiha	31	66	1	0	0	1	0	1
Mizoram	Serchhip	66	104	2	0	0	1	0	1
Nagaland	Dimapur	4095	1015	10	16	3.967	7	0.391	3
Nagaland	Kiphire	16	17	1	0	0	1	0	1
Nagaland	Kohima	2358	762	9	2	0.646	3	0.085	2
Nagaland	Longleng	18	26	1	0	0	1	0	1
Nagaland	Mokokchung	103	47	1	1	0.453	2	0.971	6
Nagaland	Mon	464	167	4	2	0.719	3	0.431	3
Nagaland	Peren	377	309	6	0	0	1	0	1
Nagaland	Phek	37	20	1	0	0	1	0	1
Nagaland	Tuensang	134	73	1	0	0	1	0	1
Nagaland	Wokha	36	20	1	0	0	1	0	1
Nagaland	Zunheboto	132	84	2	0	0	1	0	1
Odisha	Angul	6787	462	7	9	0.613	3	0.133	2
Odisha	Balangir	5858	311	6	27	1.434	5	0.461	3
Odisha	Balasore	9337	351	6	67	2.518	6	0.718	4
Odisha	Bargarh	7996	475	7	15	0.891	3	0.188	2
Odisha	Bhadrak	6269	370	6	20	1.181	4	0.319	3
Odisha	Boudh	2368	471	7	8	1.591	5	0.338	3
Odisha	Cuttack	24282	833	9	104	3.568	7	0.428	3
Odisha	Deogarh	910	258	5	1	0.283	2	0.11	2
Odisha	Dhenkanal	4628	340	6	13	0.954	4	0.281	3
Odisha	Gajapati	3765	593	8	25	3.935	7	0.664	4
Odisha	Ganjam	20825	517	8	233	5.787	8	1.119	6
Odisha	Jagatsinghapur	6589	507	8	20	1.538	5	0.304	3
Odisha	Jajapur	10142	489	7	18	0.867	3	0.177	2
Odisha	Jharsuguda	5773	873	9	5	0.756	3	0.087	2
Odisha	Kalahandi	4530	252	5	17	0.947	4	0.375	3
Odisha	Kandhamal	5354	639	9	28	3.344	7	0.523	4
Odisha	Kendrapara	6748	420	7	19	1.182	4	0.282	3
Odisha	Kendujhar	5538	267	5	15	0.724	3	0.271	2
Odisha	Khordha	45944	1744	10	205	7.781	9	0.446	3
Odisha	Koraput	6910	432	7	13	0.813	3	0.188	2
Odisha	Malkangiri	4453	637	9	16	2.291	6	0.359	3
Odisha	Mayurbhanj	10252	357	6	42	1.463	5	0.41	3
Odisha	Nabarangpur	4731	344	6	12	0.872	3	0.254	2
Odisha	Nayagarh	5604	506	8	39	3.52	7	0.696	4
Odisha	Nuapada	4765	675	9	1	0.142	2	0.021	2
Odisha	Puri	11771	597	8	78	3.958	7	0.663	4
Odisha	Rayagada	7915	726	9	40	3.669	7	0.505	4
Odisha	Sambalpur	7521	631	8	29	2.433	6	0.386	3
Odisha	Sonepur	4090	560	8	10	1.369	4	0.244	2
Odisha	Sundargarh	9745	409	7	59	2.475	6	0.605	4
Punjab	Amritsar	11404	431	7	428	16.162	10	3.753	10
Punjab	Barnala	1986	269	5	49	6.638	8	2.467	10
Punjab	Bathinda	6608	417	7	133	8.387	9	2.013	9
Punjab	Faridkot	3052	431	7	54	7.621	8	1.769	9

COVID-19 Metrics across Parliamentary Constituencies and Districts in India

Punjab	Fatehgarh Sahib	2083	306	6	99	14.52	10	4.753	10
Punjab	Fazilka	2796	226	5	46	3.726	7	1.645	8
Punjab	Firozepur	4086	385	6	117	11.016	9	2.863	10
Punjab	Gurdaspur	6675	364	6	189	10.3	9	2.831	10
Punjab	Hoshiarpur	5259	292	6	194	10.782	9	3.689	10
Punjab	Jalandhar	14398	578	8	452	18.143	10	3.139	10
Punjab	Kapurthala	3866	403	7	163	16.985	10	4.216	10
Punjab	Ludhiana	19606	489	7	818	20.395	10	4.172	10
Punjab	Mansa	1824	208	4	34	3.873	7	1.864	9
Punjab	Moga	2429	212	5	78	6.796	8	3.211	10
Punjab	Pathankot	4236	532	8	101	12.689	9	2.384	10
Punjab	Patiala	12403	656	9	363	19.206	10	2.927	10
Punjab	Rupnagar	2359	214	5	102	9.272	9	4.324	10
Punjab	Sahibzada Ajit Singh Nagar	11711	990	10	219	18.505	10	1.87	9
Punjab	Sangrur	3792	208	4	162	8.877	9	4.272	10
Punjab	Nawanshahr	1835	263	5	58	8.308	9	3.161	10
Punjab	Muktsar	2821	267	5	59	5.591	8	2.091	9
Punjab	Tarn Taran	1925	129	3	81	5.433	8	4.208	10
Puducherry	Karaikal	3255	1664	10	52	26.59	10	1.598	8
Puducherry	Mahe	740	2349	10	4	12.699	10	0.541	4
Puducherry	Puducherry	27310	2380	10	476	41.476	10	1.743	9
Puducherry	Yanam	1836	2181	10	42	49.893	10	2.288	10
Rajasthan	Ajmer	8710	297	6	127	4.332	7	1.458	8
Rajasthan	Alwar	13380	320	6	50	1.195	4	0.374	3
Rajasthan	Banswara	1462	75	1	26	1.331	4	1.778	9
Rajasthan	Baran	1436	103	2	26	1.856	5	1.811	9
Rajasthan	Barmer	3115	105	2	31	1.05	4	0.995	6
Rajasthan	Bharatpur	5172	177	4	88	3.009	7	1.701	8
Rajasthan	Bhilwara	5566	202	4	29	1.054	4	0.521	4
Rajasthan	Bikaner	11128	354	6	129	4.107	7	1.159	6
Rajasthan	Bundi	1381	107	2	9	0.695	3	0.652	4
Rajasthan	Chittorgarh	2114	105	2	25	1.245	4	1.183	7
Rajasthan	Churu	2550	131	3	19	0.977	4	0.745	5
Rajasthan	Dausa	1392	77	1	10	0.556	3	0.718	4
Rajasthan	Dholpur	3234	235	5	26	1.886	5	0.804	5
Rajasthan	Dungarpur	2357	148	3	21	1.323	4	0.891	5
Rajasthan	Ganganagar	2564	124	3	22	1.063	4	0.858	5
Rajasthan	Hanumangarh	1324	59	1	8	0.359	2	0.604	4
Rajasthan	Jaipur	28871	379	6	350	4.592	8	1.212	7
Rajasthan	Jaisalmer	1082	143	3	13	1.716	5	1.201	7
Rajasthan	Jalore	3209	154	3	34	1.627	5	1.06	6
Rajasthan	Jhalawar	2561	159	3	13	0.809	3	0.508	4
Rajasthan	Jhunjhunu	2293	94	2	24	0.98	4	1.047	6
Rajasthan	Jodhpur	25975	616	8	166	3.937	7	0.639	4
Rajasthan	Karauli	1107	69	1	13	0.806	3	1.174	7
Rajasthan	Kota	10265	463	7	112	5.049	8	1.091	6
Rajasthan	Nagaur	4588	121	3	52	1.37	4	1.133	6
Rajasthan	Pali	6705	287	6	73	3.121	7	1.089	6
Rajasthan	Pratapgarh	880	86	2	14	1.367	4	1.591	8
Rajasthan	Rajsamand	2268	165	4	26	1.887	5	1.146	6
Rajasthan	Sawai Madhopur	1065	65	1	21	1.286	4	1.972	9
Rajasthan	Sikar	5071	165	4	45	1.466	5	0.887	5
Rajasthan	Sirohi	2319	195	4	23	1.93	5	0.992	6

COVID-19 Metrics across Parliamentary Constituencies and Districts in India

Rajasthan	Tonk	1655	101	2	23	1.408	4	1.39	7
Rajasthan	Udaipur	6130	185	4	60	1.806	5	0.979	6
Sikkim	East Sikkim	1446	469	7	3	0.973	4	0.207	2
Sikkim	North Sikkim	1	2	1	0	0	1	0	1
Sikkim	South Sikkim	475	264	5	0	0	1	0	1
Sikkim	West Sikkim	87	55	1	0	0	1	0	1
Telangana	Adilabad	1969	249	5	0	0	1	0	1
Telangana	Bhadradri	5314	426	7	0	0	1	0	1
Telangana	Hyderabad	65869	1471	10	23	0.514	2	0.035	2
Telangana	Jagitial	4248	347	6	0	0	1	0	1
Telangana	Jangaon	2711	460	7	0	0	1	0	1
Telangana	Jayashankar	1625	321	6	0	0	1	0	1
Telangana	Jogulamba Gadwal	2863	529	8	1	0.185	2	0.035	2
Telangana	Kamareddy	4489	383	6	0	0	1	0	1
Telangana	Karimnagar	10138	1016	10	0	0	1	0	1
Telangana	Khammam	7269	496	8	0	0	1	0	1
Telangana	Komram Bheem	1118	171	4	0	0	1	0	1
Telangana	Mahabubabad	4243	467	7	0	0	1	0	1
Telangana	Mahabubnagar	3753	394	7	0	0	1	0	1
Telangana	Mancheria	3688	441	7	1	0.12	2	0.027	2
Telangana	Medak	2667	309	6	0	0	1	0	1
Telangana	Medchal-Malkajgiri	13703	578	8	1	0.042	2	0.007	2
Telangana	Mulugu	1782	371	6	0	0	1	0	1
Telangana	Nagarkurnool	3051	256	5	0	0	1	0	1
Telangana	Nalgonda	8999	502	8	0	0	1	0	1
Telangana	Narayanpet	947	154	3	1	0.163	2	0.106	2
Telangana	Nirmal	1890	227	5	0	0	1	0	1
Telangana	Nizamabad	6655	383	6	0	0	1	0	1
Telangana	Peddapalli	4260	418	7	0	0	1	0	1
Telangana	Rajanna	3739	691	9	0	0	2	0	1
Telangana	Rangareddy	18411	553	8	2	0.06	2	0.011	2
Telangana	Sangareddy	5953	324	6	0	0	2	0	2
Telangana	Siddipet	6031	576	8	0	0	2	0	2
Telangana	Suryapet	5235	446	7	0	0	2	0	2
Telangana	Vikarabad	1691	142	3	1	0.084	2	0.059	2
Telangana	Wanaparthy	2752	474	7	0	0	2	0	2
Telangana	Warangal (Rural)	2669	297	6	0	0	2	0	2
Telangana	Warangal (Urban)	8781	786	9	0	0	2	0	2
Telangana	Yadadri	2858	278	5	0	0	2	0	2
Tamil Nadu	Ariyalur	4260	485	7	46	5.241	8	1.08	6
Tamil Nadu	Chengalpattu	41164	2146	10	630	32.851	10	1.53	8
Tamil Nadu	Chennai	189995	3667	10	3517	67.888	10	1.851	9
Tamil Nadu	Coimbatore	39818	879	9	523	11.539	9	1.313	7
Tamil Nadu	Cuddalore	22498	769	9	261	8.921	9	1.16	6
Tamil Nadu	Dharmapuri	5170	319	6	47	2.904	6	0.909	5
Tamil Nadu	Dindigul	9574	388	7	181	7.339	8	1.891	9
Tamil Nadu	Erode	9131	497	8	113	6.151	8	1.238	7
Tamil Nadu	Kallakurichi	9955	559	8	101	5.668	8	1.015	6
Tamil Nadu	Kanchipuram	24421	1181	10	361	17.452	10	1.478	8
Tamil Nadu	Kanyakumari	14293	677	9	237	11.219	9	1.658	8
Tamil Nadu	Karur	3792	297	6	43	3.369	7	1.134	6
Tamil Nadu	Krishnagiri	6044	264	5	89	3.881	7	1.473	8
Tamil Nadu	Madurai	18018	526	8	405	11.834	9	2.248	10



# COVID-19 Metrics across Parliamentary Constituencies and Districts in India

Tamil Nadu	Nagapattinam	6245	328	6	100	5.256	8	1.601	8
Tamil Nadu	Namakkal	8095	416	7	90	4.629	8	1.112	6
Tamil Nadu	Nilgiris	6089	726	9	35	4.172	7	0.575	4
Tamil Nadu	Perambalur	2050	297	6	20	2.901	6	0.976	6
Tamil Nadu	Pudukkottai	10242	556	8	147	7.977	9	1.435	7
Tamil Nadu	Ramanathapuram	5863	417	7	125	8.899	9	2.132	9
Tamil Nadu	Ranipet	14513	866	9	173	10.319	9	1.192	7
Tamil Nadu	Salem	25127	648	9	392	10.104	9	1.56	8
Tamil Nadu	Sivaganga	5651	350	6	124	7.688	9	2.194	9
Tamil Nadu	Tenkasi	7718	495	8	151	9.69	9	1.956	9
Tamil Nadu	Thanjavur	14479	525	8	211	7.657	9	1.457	8
Tamil Nadu	Theni	15952	1130	10	189	13.392	10	1.185	7
Tamil Nadu	Tiruvallur	36066	767	9	600	12.758	10	1.664	8
Tamil Nadu	Tiruvarur	9007	584	8	87	5.638	8	0.966	6
Tamil Nadu	Thoothukkudi	14491	753	9	126	6.55	8	0.87	5
Tamil Nadu	Tiruchirappalli	11850	385	6	162	5.269	8	1.367	7
Tamil Nadu	Tirunelveli	13880	679	9	205	10.022	9	1.477	8
Tamil Nadu	Tirupathur	6109	539	8	116	10.237	9	1.899	9
Tamil Nadu	Tiruppur	11165	355	6	165	5.242	8	1.478	8
Tamil Nadu	Tiruvannamalai	17064	595	8	254	8.857	9	1.489	8
Tamil Nadu	Vellore	17033	1024	10	292	17.553	10	1.714	8
Tamil Nadu	Viluppuram	13109	648	9	102	5.041	8	0.778	5
Tamil Nadu	Virudhunagar	15134	659	9	217	9.455	9	1.434	7
Tripura	Dhalai	3129	721	9	13	2.995	7	0.415	3
Tripura	Gomati	3565	708	9	34	6.754	8	0.954	6
Tripura	Khowai	1722	346	6	30	6.023	8	1.742	9
Tripura	North Tripura	2486	543	8	14	3.058	7	0.563	4
Tripura	Sepahijala	2693	516	8	26	4.978	8	0.965	6
Tripura	South Tripura	3059	647	9	18	3.808	7	0.588	4
Tripura	Unakoti	2346	737	9	17	5.34	8	0.725	4
Tripura	West Tripura	10465	1123	10	174	18.674	10	1.663	8
Uttar Pradesh	Agra	6725	118	2	137	2.398	6	2.037	9
Uttar Pradesh	Aligarh	9153	224	5	43	1.052	4	0.47	3
Uttar Pradesh	Ambedkar Nagar	1657	60	1	34	1.239	4	2.052	9
Uttar Pradesh	Amethi	2803	94	2	24	0.808	3	0.856	5
Uttar Pradesh	Amroha	3421	179	4	42	2.193	6	1.228	7
Uttar Pradesh	Auraiya	2622	178	4	35	2.371	6	1.335	7
Uttar Pradesh	Faizabad	6789	207	4	88	2.682	6	1.296	7
Uttar Pradesh	Azamgarh	5155	90	2	78	1.366	4	1.513	8
Uttar Pradesh	Baghpat	1421	95	2	24	1.608	5	1.689	8
Uttar Pradesh	Bahraich	3556	82	1	64	1.479	5	1.8	9
Uttar Pradesh	Ballia	6468	178	4	86	2.364	6	1.33	7
Uttar Pradesh	Balrampur	1720	71	1	26	1.074	4	1.512	8
Uttar Pradesh	Banda	2468	120	3	26	1.262	4	1.053	6
Uttar Pradesh	Barabanki	6767	206	4	76	2.311	6	1.123	6
Uttar Pradesh	Bareilly	11474	227	5	151	2.986	7	1.316	7
Uttar Pradesh	Basti	4220	135	3	80	2.562	6	1.896	9
Uttar Pradesh	Bhadohi	1839	104	2	17	0.959	4	0.924	5
Uttar Pradesh	Bijnor	3349	79	1	48	1.137	4	1.433	7
Uttar Pradesh	Budaun	2986	85	2	40	1.142	4	1.34	7
Uttar Pradesh	Bulandshahr	4200	107	2	69	1.755	5	1.643	8
Uttar Pradesh	Chandauli	3633	165	4	42	1.904	5	1.156	6
Uttar Pradesh	Chitrakoot	1565	139	3	12	1.062	4	0.767	5
Uttar Pradesh	Deoria	6062	171	4	79	2.222	6	1.303	7



# COVID-19 Metrics across Parliamentary Constituencies and Districts in India

Uttar Pradesh	Etah	1948	93	2	18	0.857	3	0.924	5
Uttar Pradesh	Etawah	4605	244	5	71	3.757	7	1.542	8
Uttar Pradesh	Farrukhabad	3701	172	4	51	2.376	6	1.378	7
Uttar Pradesh	Fatehpur	2858	95	2	50	1.67	5	1.749	9
Uttar Pradesh	Firozabad	2907	135	3	60	2.79	6	2.064	9
Uttar Pradesh	Gautam Buddha Nagar	15913	844	9	65	3.449	7	0.408	3
Uttar Pradesh	Ghaziabad	17089	484	7	81	2.293	6	0.474	3
Uttar Pradesh	Ghazipur	4254	103	2	62	1.496	5	1.457	8
Uttar Pradesh	Gonda	4213	107	2	47	1.19	4	1.116	6
Uttar Pradesh	Gorakhpur	17936	331	6	297	5.486	8	1.656	8
Uttar Pradesh	Hamirpur	1224	97	2	19	1.5	5	1.552	8
Uttar Pradesh	Hapur (Panchsheel Nagar)	3117	186	4	55	3.28	7	1.765	9
Uttar Pradesh	Hardoi	5100	109	2	84	1.799	5	1.647	8
Uttar Pradesh	Hathras	1077	57	1	7	0.371	2	0.65	4
Uttar Pradesh	Jalaun	2684	140	3	33	1.725	5	1.23	7
Uttar Pradesh	Jaunpur	5550	108	2	80	1.551	5	1.441	8
Uttar Pradesh	Jhansi	8074	350	6	167	7.248	8	2.068	9
Uttar Pradesh	Kannauj	2904	155	3	39	2.079	6	1.343	7
Uttar Pradesh	Kanpur Dehat	1808	139	3	27	2.073	6	1.493	8
Uttar Pradesh	Kanpur Nagar	27250	454	7	711	11.858	9	2.609	10
Uttar Pradesh	Kanshiram Nagar	1456	92	2	3	0.191	2	0.206	2
Uttar Pradesh	Kaushambi	1746	134	3	22	1.69	5	1.26	7
Uttar Pradesh	Kushinagar	5177	129	3	53	1.318	4	1.024	6
Uttar Pradesh	Lakhimpur Kheri	6198	135	3	66	1.436	5	1.065	6
Uttar Pradesh	Lalitpur	2771	198	4	42	3.003	7	1.516	8
Uttar Pradesh	Lucknow	59811	1136	10	818	15.543	10	1.368	7
Uttar Pradesh	Maharajganj	5230	194	4	84	3.108	7	1.606	8
Uttar Pradesh	Mahoba	1003	99	2	9	0.893	3	0.897	5
Uttar Pradesh	Mainpuri	2985	143	3	50	2.394	6	1.675	8
Uttar Pradesh	Mathura	4647	160	4	100	3.444	7	2.152	9
Uttar Pradesh	Mau	2688	130	3	33	1.6	5	1.228	7
Uttar Pradesh	Meerut	12204	310	6	291	7.388	8	2.384	10
Uttar Pradesh	Mirzapur	2711	95	2	29	1.02	4	1.07	6
Uttar Pradesh	Moradabad	9973	277	5	162	4.494	8	1.624	8
Uttar Pradesh	Muzaffarnagar	5643	164	4	76	2.212	6	1.347	7
Uttar Pradesh	Pilibhit	3636	157	3	72	3.112	7	1.98	9
Uttar Pradesh	Pratapgarh	4139	113	2	50	1.368	4	1.208	7
Uttar Pradesh	Allahabad	22285	305	6	306	4.183	7	1.373	7
Uttar Pradesh	Rae Bareli	3582	129	3	91	3.287	7	2.54	10
Uttar Pradesh	Rampur	4939	184	4	46	1.718	5	0.931	6
Uttar Pradesh	Saharanpur	7581	192	4	116	2.939	6	1.53	8
Uttar Pradesh	Sambhal (Bhim Nagar)	2594	93	2	38	1.362	4	1.465	8
Uttar Pradesh	Sant Kabir Nagar	2864	132	3	40	1.847	5	1.397	7
Uttar Pradesh	Shahjahanpur	6166	178	4	88	2.544	6	1.427	7
Uttar Pradesh	Shamali (Prabuddh Nagar)	2721	211	4	25	1.941	5	0.919	5
Uttar Pradesh	Shravasti	1070	118	2	13	1.431	4	1.215	7
Uttar Pradesh	Siddharth Nagar	3580	148	3	42	1.742	5	1.173	7
Uttar Pradesh	Sitapur	4045	79	1	55	1.08	4	1.36	7
Uttar Pradesh	Sonbhadra	3421	163	4	46	2.187	6	1.345	7
Uttar Pradesh	Sultanpur	3707	148	3	60	2.397	6	1.619	8
Uttar Pradesh	Unnao	3847	108	2	77	2.16	6	2.002	9
Uttar Pradesh	Varanasi	16461	393	7	310	7.394	8	1.883	9
Uttarakhand	Almora	1720	243	5	8	1.13	4	0.465	3
Uttarakhand	Bageshwar	829	275	5	5	1.659	5	0.603	4

COVID-19 Metrics across Parliamentary Constituencies and Districts in India

Uttarakhand	Chamoli	1491	347	6	0	0	2	0	2
Uttarakhand	Champawat	1064	364	6	5	1.709	5	0.47	3
Uttarakhand	Dehradun	16120	811	9	532	26.771	10	3.3	10
Uttarakhand	Haridwar	10590	485	7	116	5.308	8	1.095	6
Uttarakhand	Nainital	6852	609	8	133	11.816	9	1.941	9
Uttarakhand	Pauri Garhwal	2496	353	6	23	3.252	7	0.921	5
Uttarakhand	Pithoragarh	1330	245	5	5	0.921	4	0.376	3
Uttarakhand	Rudraprayag	979	284	5	2	0.579	3	0.204	2
Uttarakhand	Tehri Garhwal	2862	436	7	5	0.762	3	0.175	2
Uttarakhand	Udham Singh Nagar	9178	492	7	84	4.502	8	0.915	5
Uttarakhand	Uttarkashi	2513	668	9	9	2.391	6	0.358	3
West Bengal	Alipurduar	5849	330	6	72	4.064	7	1.231	7
West Bengal	Bankura	6823	165	4	69	1.671	5	1.011	6
West Bengal	Birbhum	5198	129	3	42	1.04	4	0.808	5
West Bengal	Cooch Behar	7372	230	5	47	1.466	5	0.638	4
West Bengal	Dakshin Dinajpur	6334	315	6	44	2.19	6	0.695	4
West Bengal	Darjiling	9687	540	8	128	7.135	8	1.321	7
West Bengal	Hooghly	15711	250	5	278	4.419	7	1.769	9
West Bengal	Howrah	22276	401	7	671	12.09	9	3.012	10
West Bengal	Jalpaiguri	7691	299	6	76	2.954	7	0.988	6
West Bengal	Jhargram	1365	96	2	10	0.706	3	0.733	5
West Bengal	Kalimpong	1283	390	7	11	3.344	7	0.857	5
West Bengal	Kolkata	69844	1406	10	1984	39.929	10	2.841	10
West Bengal	Malda	8494	187	4	69	1.522	5	0.812	5
West Bengal	Murshidabad	7477	93	2	83	1.034	4	1.11	6
West Bengal	Nadia	9859	169	4	115	1.973	5	1.166	6
West Bengal	North 24 Parganas	64780	573	8	1374	12.156	9	2.121	9
West Bengal	Paschim Bardhaman	8870	254	5	92	2.634	6	1.037	6
West Bengal	Paschim Medinipur	12118	224	5	184	3.399	7	1.518	8
West Bengal	Purba Bardhaman	6483	121	3	64	1.195	4	0.987	6
West Bengal	Purba Medinipur	13212	228	5	167	2.886	6	1.264	7
West Bengal	Purulia	4534	136	3	25	0.749	3	0.551	4
West Bengal	South 24 Parganas	21380	220	5	402	4.145	7	1.88	9
West Bengal	Uttar Dinajpur	4330	135	3	46	1.433	5	1.062	6